

HOTEL OCCUPANCY RATES-U.S. Virgin Islands
Year To Date, Monthly, Quarterly and Annual Totals
January 2015 to December 2016

Period	ST. THOMAS/ST. JOHN			ST. CROIX			U.S.V.I., TOTAL		
	Percent 2015	Percent 2016	Pct. Pt. Change	Percent 2015	Percent 2016	Pct. Pt. Change	Percent 2015	Percent 2016	Pct. Pt. Change

YEAR TO DATE:

DECEMBER 61.0 59.9 -1.1 44.5 46.4 1.8 57.1 56.7 -0.4

MONTH:

January 69.0 69.8 0.8 51.3 54.2 2.9 64.7 66.2 1.5
February 70.1 69.6 -0.4 60.0 68.2 8.2 67.8 69.3 1.5
March 69.8 69.0 -0.7 59.5 61.5 2.0 67.5 67.3 -0.1
April 68.2 63.0 -5.2 46.9 42.8 -4.1 63.2 57.9 -5.2
May 64.5 58.6 -5.8 40.4 46.4 6.0 58.9 55.9 -3.0
June 62.9 63.9 1.0 46.7 44.5 -2.2 58.9 59.2 0.3
July 63.7 63.5 -0.2 52.2 45.9 -6.3 60.9 59.1 -1.8
August 56.5 57.8 1.4 35.2 42.7 7.4 51.3 54.3 3.0
September 41.1 41.3 0.2 28.5 33.2 4.7 37.9 39.3 1.3
October 46.2 43.5 -2.7 31.1 30.0 -1.1 42.6 40.2 -2.5
November 57.9 54.9 -2.9 39.2 39.2 0.1 53.4 51.1 -2.3
December 63.7 64.3 0.6 47.6 53.6 5.9 60.0 61.8 1.8

QUARTER:

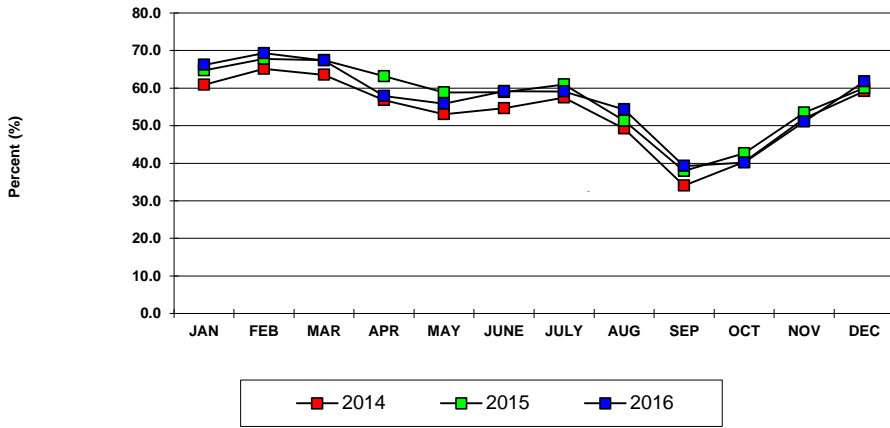
First 69.6 69.5 -0.1 56.7 61.1 4.4 66.6 67.6 1.0
Second 65.2 61.8 -3.4 44.7 44.5 -0.2 60.3 57.6 -2.6
Third 53.8 54.4 0.5 38.4 40.6 2.1 50.1 51.0 1.0
Fourth 55.8 54.0 -1.8 39.1 40.4 1.3 51.9 50.7 -1.2

ANNUAL TOTAL: 61.0 59.9 -1.1 44.5 46.4 1.8 57.1 56.7 -0.4

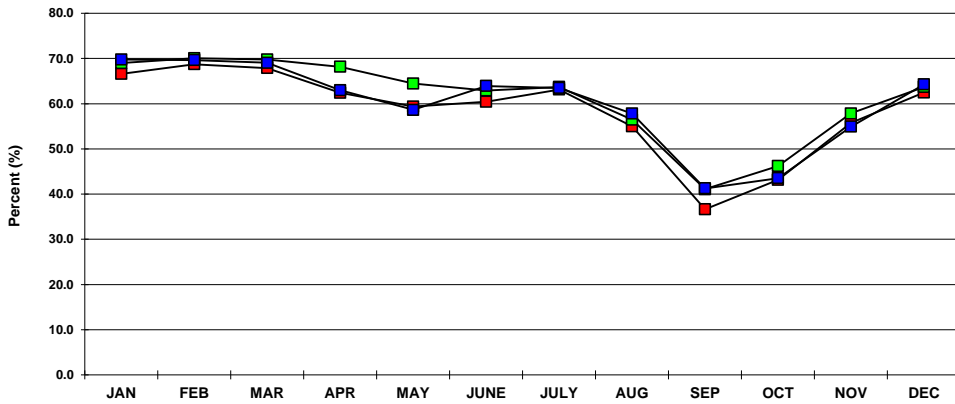
Notes:

Occupancy Rate equals reported number of room nights occupied as a percentage of reported room nights available. Percentage point change equals the absolute difference between current month and same month one year prior. Data subject to revision. **Please note this report is missing data related to several accomodation establishments. The report will be revised in the near future.**

**U.S.V.I. OCCUPANCY RATES
2014, 2015 AND 2016 YTD**



**ST. THOMAS/ST. JOHN OCCUPANCY
2014, 2015 AND 2016 YTD**



**ST. CROIX OCCUPANCY RATES
2014, 2015 AND 2016 YTD**

