

## TOTAL CONSTRUCTION PERMIT VALUE - U.S. VIRGIN ISLANDS

Year To Date, Monthly, Quarterly and Annual Totals  
 In Thousands of Dollars, January 2021 to April 2022  
[webmaster@usviber.org](mailto:webmaster@usviber.org)  
[www.usviber.org](http://www.usviber.org)

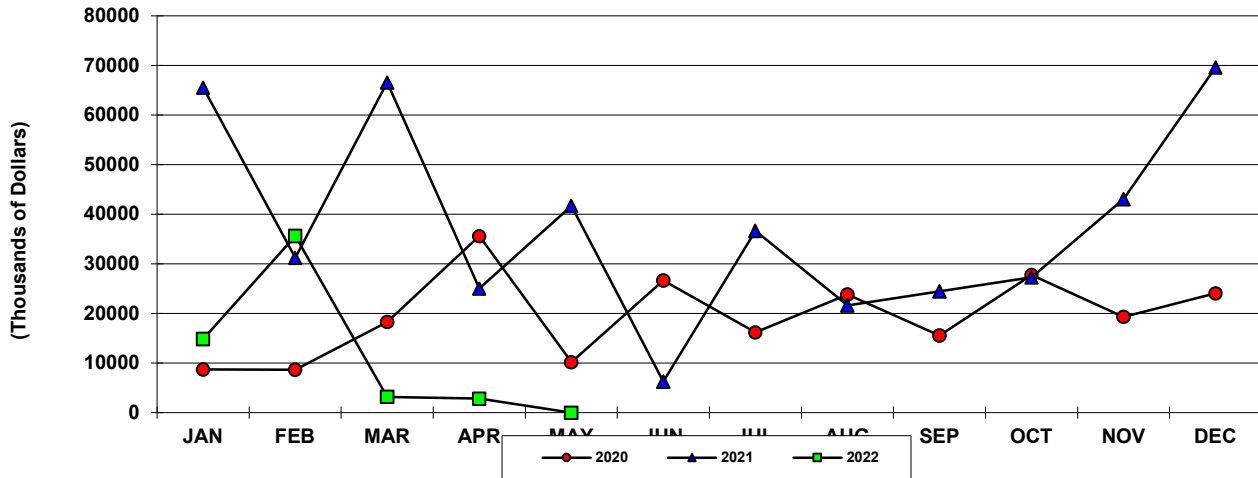
Period	ST. THOMAS/ST. JOHN			ST. CROIX			U.S.V.I., TOTAL		
	2021	2022	Percent Change	2021	2022	Percent Change	2021	2022	Percent Change
<b>YEAR TO DATE:</b>									
<b>APRIL</b>	<b>120,125</b>	<b>38,574</b>	<b>-67.9</b>	<b>68,096</b>	<b>17,951</b>	<b>-73.6</b>	<b>188,220</b>	<b>56,525</b>	<b>-70.0</b>
<b>MONTH:</b>									
January	49,809	7,675	-84.6	15,683	7,163	-54.3	65,493	14,838	-77.3
February	22,990	28,920	25.8	8,217	6,687	-18.6	31,207	35,607	14.1
March	33,260	1,185	-96.4	33,267	2,036	-93.9	66,526	3,221	-95.2
April	14,066	794	-94.4	10,929	2,066	-81.1	24,995	2,859	-88.6
May	7,779	-	-	33,925	-	-	41,704	-	-
June	1,374	-	-	4,918	-	-	6,291	-	-
July	19,402	-	-	17,240	-	-	36,642	-	-
August	11,885	-	-	9,749	-	-	21,634	-	-
September	12,167	-	-	12,297	-	-	24,463	-	-
October	6,580	-	-	20,716	-	-	27,296	-	-
November	18,766	-	-	24,234	-	-	43,000	-	-
December	13,144	-	-	56,461	-	-	69,605	-	-
<b>QUARTER:</b>									
First	106,059	37,781	-64.4	57,167	15,885	-72.2	163,226	53,666	-67.1
Second	23,218	-	-	49,772	-	-	72,989	-	-
Third	43,454	-	-	39,286	-	-	82,740	-	-
Fourth	38,491	-	-	101,410	-	-	139,901	-	-
<b>ANNUAL TOTAL:</b>	<b>211,221</b>	<b>-</b>	<b>-</b>	<b>247,634</b>	<b>-</b>	<b>-</b>	<b>458,856</b>	<b>-</b>	<b>-</b>

**Notes:**

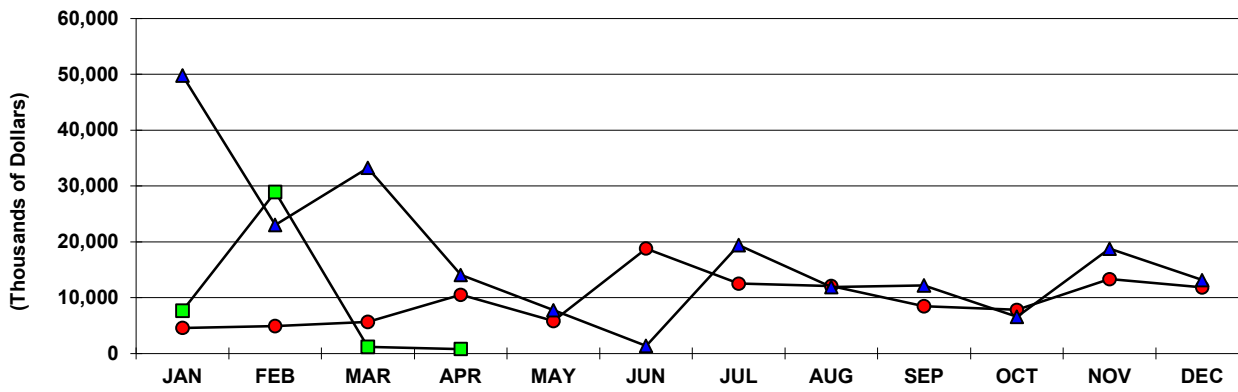
Value of all types of intended building construction. Compiled from Dept. of Planning and Natural Resources approved permits for which estimated value is available. [-] denotes data unavailable or not presented due to extreme fluctuations of percent changes.  
 Data subject to revision.

::

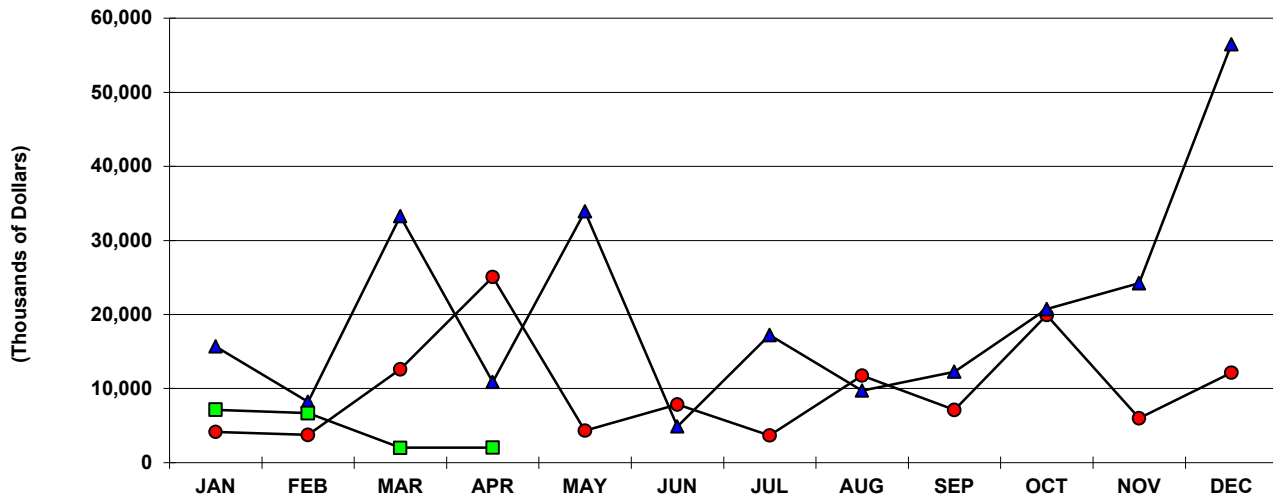
**U.S.V.I. TOTAL PERMIT VALUE  
2020, 2021 AND 2022 APRIL YTD**



**ST. THOMAS/JOHN TOTAL PERMIT VALUE  
2020, 2021 AND 2022 APRIL YTD**



**ST. CROIX TOTAL PERMIT VALUE  
2020, 2021 AND 2022 APRIL YTD**



## PRIVATE RESIDENTIAL CONSTRUCTION PERMITS VALUE - U.S. Virgin Islands

Year To Date, Monthly, Quarterly and Annual Totals  
In Thousands of Dollars, January 2021 to April 2022

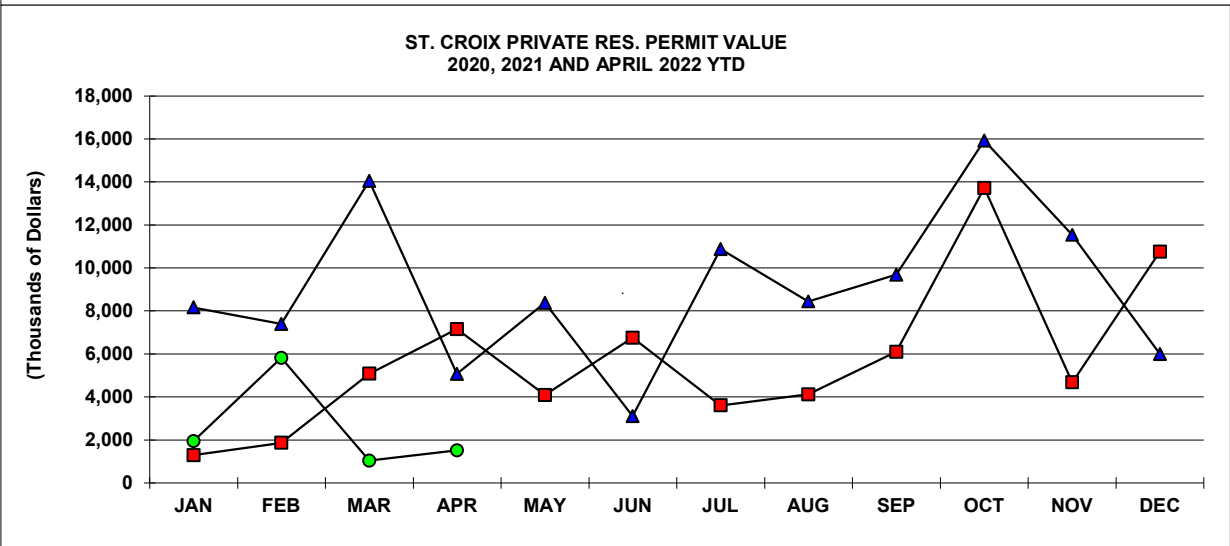
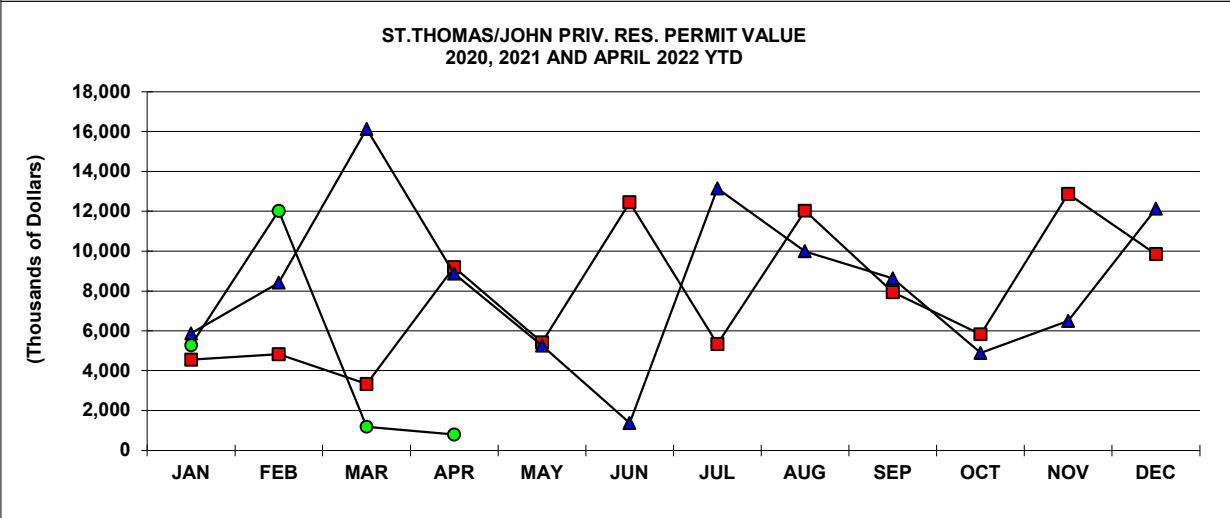
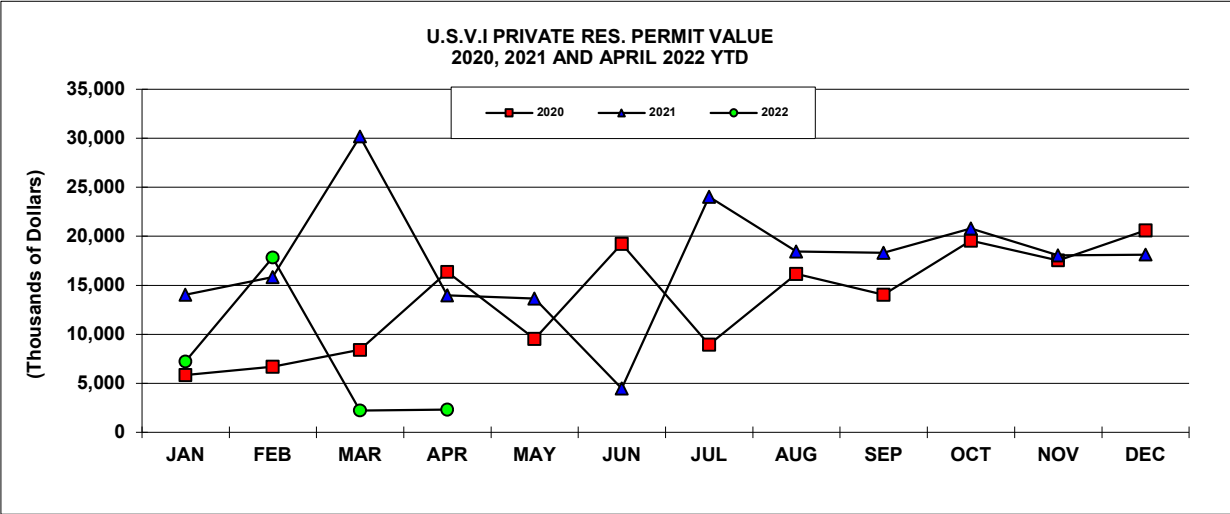
[webmaster@usviber.org](mailto:webmaster@usviber.org)  
[www.usviber.org](http://www.usviber.org)

Period	ST. THOMAS/ST. JOHN			ST. CROIX			U.S.V.I., TOTAL		
	2021	2022	Percent Change	2021	2022	Percent Change	2021	2022	Percent Change
<b>YEAR TO DATE:</b>									
<b>APRIL</b>	<b>39,316</b>	<b>19,281</b>	-51.0	<b>34,684</b>	<b>10,323</b>	-70.2	<b>73,999</b>	<b>29,605</b>	-60.0
<b>MONTH:</b>									
January	5,877	5,284	-10.1	8,161	1,949	-76.1	14,038	7,232	-48.5
February	8,422	12,019	42.7	7,404	5,818	-21.4	15,826	17,837	12.7
March	16,132	1,185	-92.7	14,043	1,039	-92.6	30,175	2,224	-92.6
April	8,884	794	-91.1	5,076	1,517	-70.1	13,960	2,311	-83.4
May	5,258	-	-	8,379	-	-	13,637	-	-
June	1,374	-	-	3,108	-	-	4,481	-	-
July	13,147	-	-	10,880	-	-	24,027	-	-
August	9,999	-	-	8,449	-	-	18,448	-	-
September	8,635	-	-	9,687	-	-	18,322	-	-
October	4,886	-	-	15,923	-	-	20,809	-	-
November	6,491	-	-	11,544	-	-	18,035	-	-
December	12,139	-	-	5,993	-	-	18,132	-	-
<b>QUARTER:</b>									
First	30,431	18,487	-39.2	29,608	8,806	-70.3	60,039	27,293	-54.5
Second	15,516	-	-	16,562	-	-	32,078	-	-
Third	31,782	-	-	29,016	-	-	60,797	-	-
Fourth	23,516	-	-	33,460	-	-	56,976	-	-
<b>ANNUAL TOTAL:</b>	<b>101,245</b>	<b>-</b>	<b>-</b>	<b>108,646</b>	<b>-</b>	<b>-</b>	<b>209,891</b>	<b>-</b>	<b>-</b>

**Notes:**

Value of intended construction of new housekeeping residences as well as additions and alterations to existing residences. Construction relating to hotels and other structures intended for use as transient accommodations are not included. Compiled from Dept. of planning and Natural Resources approved permits for which estimated value is available. [-] denotes data unavailable or not presented due to extreme fluctuations of percent changes.

*Data subject to revision.*



**PRIVATE NON-RESIDENTIAL CONSTRUCTION PERMIT VALUE - U.S. VIRGIN ISLANDS**

Year To Date, Monthly, Quarterly and Annual Totals  
In Thousands of Dollars, January 2021 to April 2022

[webmaster@usviber.org](mailto:webmaster@usviber.org)  
[www.usviber.org](http://www.usviber.org)

Period	ST. THOMAS/ST. JOHN			ST. CROIX			U.S.V.I., TOTAL		
	2021	2022	Percent Change	2021	2022	Percent Change	2021	2022	Percent Change
<b>YEAR TO DATE: APRIL</b>	<b>5,681</b>	<b>1,252</b>	<b>-78.0</b>	<b>7,682</b>	<b>972</b>	<b>-87.3</b>	<b>10,367</b>	<b>2,224</b>	<b>-78.5</b>
<b>MONTH:</b>									
January	0	0	-	670	0	-100.0	670	0	-100.0
February	0	1,252	-	1,878	26	-98.6	1,914	1,278	-33.2
March	3,131	0	-100.0	4,987	946	-81.0	6,896	946	-86.3
April	2,550	0	-100.0	147	0	-100.0	888	0	-100.0
May	324	-	-	211	-	-	450	-	-
June	0	-	-	1,094	-	-	7,432	-	-
July	5,310	-	-	91	-	-	3,009	-	-
August	1,876	-	-	7,619	-	-	7,624	-	-
September	3,372	-	-	255	-	-	786	-	-
October	1,076	-	-	1,928	-	-	3,135	-	-
November	574	-	-	1,308	-	-	1,755	-	-
December	989	-	-	1,155	-	-	2,862	-	-
<b>QUARTER:</b>									
First	3,131	1,252	-60.0	7,535	972	-87.1	9,479	2,224	-76.5
Second	2,874	-	-	1,452	-	-	8,769	-	-
Third	10,558	-	-	7,965	-	-	11,419	-	-
Fourth	2,640	-	-	4,391	-	-	7,752	-	-
<b>ANNUAL TOTAL:</b>	<b>19,202</b>	<b>-</b>	<b>0.0</b>	<b>21,344</b>	<b>-</b>	<b>0.0</b>	<b>37,419</b>	<b>-</b>	<b>0.0</b>

Notes:

Value of intended private building construction exclusive of housekeeping residences. Includes hotels and other structures intended for use as transient accommodations. Compiled from Dept. of Planning and Natural Resources approved permits for which estimated value is available. [-] denotes data not presented due to extreme fluctuations of percent changes.

Data subject to revision.

## PUBLIC CONSTRUCTION PERMIT VALUE - U.S. VIRGIN ISLANDS

Year To Date, Monthly, Quarterly and Annual Totals  
In Thousands of Dollars, January 2021 to April 2022

[webmaster@usviber.org](mailto:webmaster@usviber.org)

[www.usviber.org](http://www.usviber.org)

Period	ST. THOMAS/ST. JOHN			ST. CROIX			U.S.V.I., TOTAL		
	2021	2022	Percent Change	2021	2022	Percent Change	2021	2022	Percent Change
<b>YEAR TO DATE:</b>									
<b>APRIL</b>	74,942	18,041	-75.9	24,666	6,655	-73.0	99,608	24,696	-75.2
<b>MONTH:</b>									
January	43,746	2,392	-94.5	5,522	5,214	-5.6	49,268	7,606	-84.6
February	14,568	15,649	7.4	813	843	3.7	15,381	16,493	7.2
March	13,997	0	-100.0	18,194	50	-99.7	32,190	50	-99.8
April	2,631	0	-100.0	138	548	298.7	2,769	548	-80.2
May	2,196	-	-	62	-	-	2,258	-	-
June	0	-	-	1,810	-	-	1,810	-	-
July	945	-	-	1,079	-	-	2,024	-	-
August	10	-	-	1,300	-	-	1,310	-	-
September	160	-	-	2,610	-	-	2,770	-	-
October	618	-	-	3,717	-	-	4,335	-	-
November	11,701	-	-	12,155	-	-	23,857	-	-
December	16	-	-	50,468	-	-	50,484	-	-
<b>QUARTER:</b>									
First	72,310	18,041	-75.1	24,529	6,107	-75.1	96,839	24,148	-75.1
Second	4,828	-	-	2,009	-	-	6,837	-	-
Third	1,115	-	-	4,989	-	-	6,104	-	-
Fourth	12,335	-	-	66,340	-	-	78,675	-	-
<b>ANNUAL TOTAL:</b>	<b>90,588</b>	<b>-</b>	<b>-</b>	<b>97,868</b>	<b>-</b>	<b>-</b>	<b>188,456</b>	<b>-</b>	<b>-</b>

**Notes:**

Value of intended Federal or Territory government building construction. Compiled from Dept. of Planning and Natural Resources approved permits for which estimated value is available. [-] denotes data unavailable or not present due to extreme fluctuations of percent changes.

*Data subject to revision.*

::