

CRUISE SHIP CALLS - U.S. Virgin Islands

Year To Date, Monthly, Quarterly and Annual Totals

January 2020 to November 2021

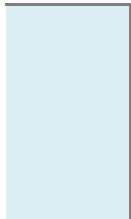
webmaster@usviber.org

www.usviber.org

	ST. THOMAS/ST. JOHN			ST. CROIX			U.S.V.I., TC	
	2020	2021	Percent Change	2020	2021	Percent Change	2020	2021
YEAR TO DATE:								
NOVEMBER	156	56	-64.1026	9	7	-22.222	165	63
MONTH:								
January	68	0	-100.0	5	0	-100.0	73	0
February	61	0	-100.0	4	0	-100.0	65	0
March	27	0	-100.0	0	0	-100.0	27	0
April	0	0	0.0	0	0	0.0	0	0
May	0	0	0.0	0	0	0.0	0	0
June	0	0	0.0	0	0	0.0	0	0
July	0	3	0.0	0	0	0.0	0	3
August	0	7	0.0	0	1	0.0	0	8
September	0	8	0.0	0	2	0.0	0	10
October	0	8	0.0	0	0	0.0	0	8
November	0	30	0.0	0	4	0.0	0	34
December	0	-	-	0	-	-	0	-
QUARTER:								
First	156	0	-100.0	9	0	-100.0	165	0
Second	0	0	-	0	0	-	0	0
Third	0	18	-	0	3	-	0	21
Fourth	0	-	-	0	-	-	0	-
ANNUAL TOTAL:	156	-	-	9	-	-	165	-

Notes:

Totals by island include first and second port of entry ship calls. Total ship calls for the U.S.V.I. include first territorial port of entry only; ships visiting more than one U.S. Virgin Island during the same cruise are only counted once in the U.S.V.I. total. Consequently, the U.S.V.I. total will always be less than or equal to the sum of the two island totals as indicated. Data subject to revision.



TOTAL

Percent
Change

-61.818

-100.0

-100.0

-100.0

0.0

0.0

0.0

0.0

0.0

0.0

0.0

0.0

-

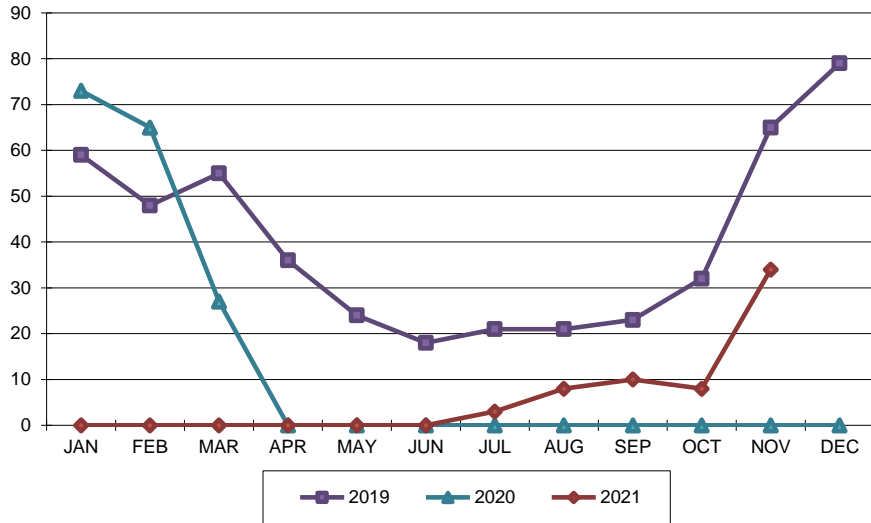
-

-

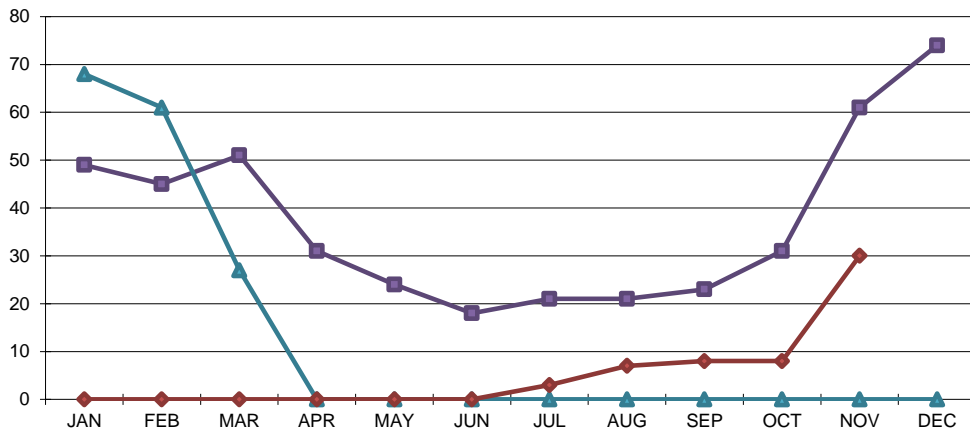
-

-

USVI CRUISE CALLS
2019, 2020 AND 2021 YTD



ST. THOMAS CRUISE CALLS
2019, 2020 AND 2021 YTD



ST. CROIX CRUISE CALLS
2019, 2020 AND 2021 YTD

