

## CIVILIAN EMPLOYMENT - U.S. Virgin Islands

Monthly Totals, Year To Date, Quarterly and Annual Averages

January 2020 to May 2021

[webmaster@usviber.org](mailto:webmaster@usviber.org)

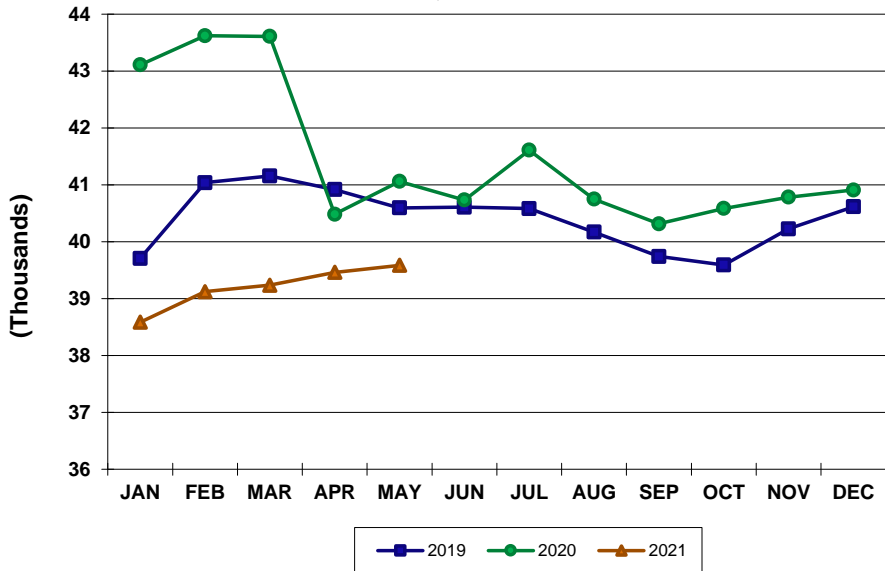
[www.usviber.org](http://www.usviber.org)

Period	ST. THOMAS/ST. JOHN			ST. CROIX			U.S.V.I., TOTAL		
	2020	2021	Percent Change	2020	2021	Percent Change	2020	2021	Percent Change
<b>YEAR TO DATE AVG:</b>									
<b>MAY</b>	23,340	<b>20,662</b>	-11.5	19,037	<b>18,535</b>	-2.6	42,377	<b>39,197</b>	-7.5
<b>MONTHLY TOTAL:</b>									
January	23,978	20,504	-14.5	19,131	18,080	-5.5	43,109	38,584	-10.5
February	24,025	20,750	-13.6	19,597	18,372	-6.3	43,622	39,122	-10.3
March	24,030	20,870	-13.2	19,579	18,365	-6.2	43,609	39,235	-10.0
April	22,244	20,541	-7.7	18,240	18,919	3.7	40,484	39,460	-2.5
May	22,421	20,646	-7.9	18,638	18,938	1.6	41,059	39,584	-3.6
June	22,265	-	-	18,469	-	-	40,734	-	-
July	22,502	-	-	19,107	-	-	41,609	-	-
August	21,760	-	-	18,987	-	-	40,747	-	-
September	21,416	-	-	18,900	-	-	40,316	-	-
October	21,470	-	-	19,114	-	-	40,584	-	-
November	21,600	-	-	19,184	-	-	40,784	-	-
December	21,666	-	-	19,243	-	-	40,909	-	-
<b>QUARTERLY AVG:</b>									
First	24,011	20,708	-13.8	19,436	18,272	-6.0	43,447	38,980	-10.3
Second	22,310	-	-	18,449	-	-	40,759	-	-
Third	21,893	-	-	18,998	-	-	40,891	-	-
Fourth	21,579	-	-	19,180	-	-	40,759	-	-
<b>ANNUAL AVG:</b>	22,448	-	-	19,016	-	-	41,464	-	-

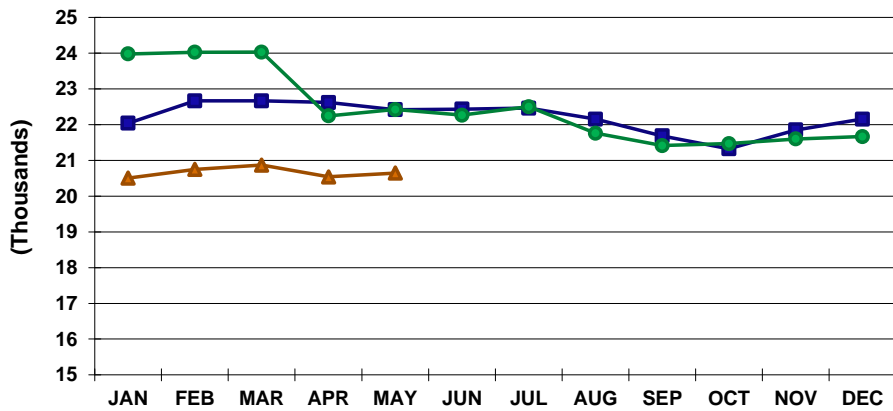
**Notes:**

Compiled from U.S.V.I. Bureau of Labor Statistics data. Data subject to revision.

**U.S.V.I. CIVILIAN EMPLOYMENT  
2019, 2020 AND 2021 YTD**



**ST. THOMAS/ST. JOHN CIVILIAN EMPLOYMENT  
2019, 2020 AND 2021 YTD**



**ST. CROIX CIVILIAN EMPLOYMENT  
2019, 2020 AND 2021 YTD**

