

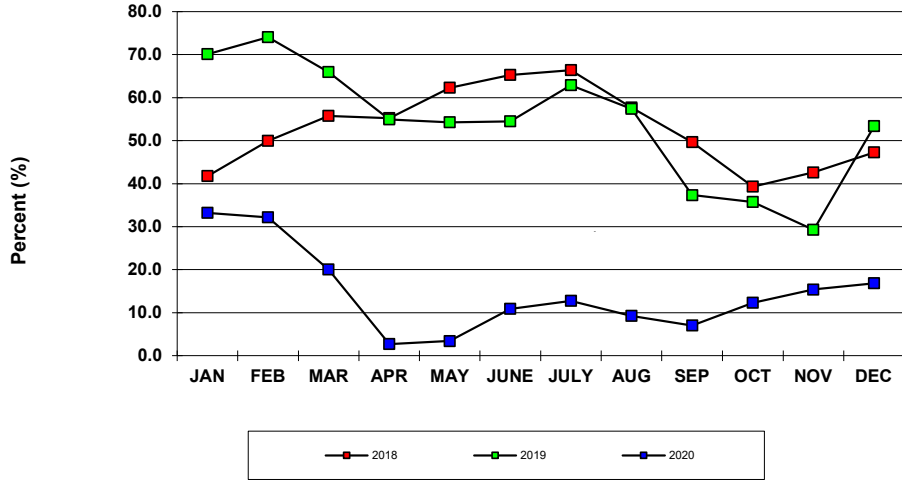
HOTEL OCCUPANCY RATES-U.S. Virgin Islands  
Year To Date, Monthly, Quarterly and Annual Totals  
January 2019 to December 2020

Period	ST. THOMAS/ST. JOHN			ST. CROIX			U.S.V.I., TOTAL		
	Percent 2019	Percent 2020	Pct. Pt. Change	Percent 2019	Percent 2020	Pct. Pt. Change	Percent 2019	Percent 2020	Pct. Pt. Change
<b>YEAR TO DATE:</b>									
DECEMBER	47.6	51.2	3.7	57.6	51.5	-6.1	51.4	51.3	-0.1
<b>MONTH:</b>									
January	77.5	28.8	-48.6	58.8	44.8	-13.9	70.1	33.2	-36.9
February	75.6	27.3	-48.3	62.7	47.5	-15.1	74.0	32.2	-41.8
March	69.0	16.5	-52.5	61.3	31.2	-30.1	65.9	20.0	-45.9
April	57.3	0.5	-56.8	50.8	9.6	-41.2	54.9	2.7	-52.2
May	57.1	2.3	-54.8	49.5	7.0	-42.5	54.3	3.4	-50.9
June	59.3	8.0	-51.3	46.3	20.2	-26.1	54.5	10.9	-43.6
July	73.5	11.1	-62.4	50.0	18.0	-31.9	62.9	12.7	-50.2
August	60.5	10.0	-50.5	53.0	6.7	-46.3	57.4	9.2	-48.1
September	32.3	3.1	-29.2	47.7	20.0	-27.7	37.3	7.0	-30.3
October	31.3	10.2	-21.1	46.1	19.2	-26.9	35.7	12.3	-23.5
November	25.2	13.6	-11.6	40.9	21.2	-19.8	29.3	15.4	-13.9
December	52.9	14.8	-38.1	54.3	23.7	-30.6	53.4	16.9	-36.5
<b>QUARTER:</b>									
First	76.1	23.9	-52.2	60.9	41.0	-19.8	70.0	28.2	-41.8
Second	57.9	3.7	-54.2	48.9	12.2	-36.7	54.6	5.7	-48.9
Third	51.0	8.1	-42.9	50.2	14.9	-35.3	50.7	9.7	-41.0
Fourth	33.5	12.8	-20.7	46.6	21.3	-25.2	37.3	14.8	-22.5
<b>ANNUAL TOTAL:</b>	51.3	11.9	-39.4	51.5	22.3	-29.2	51.4	14.4	-37.0

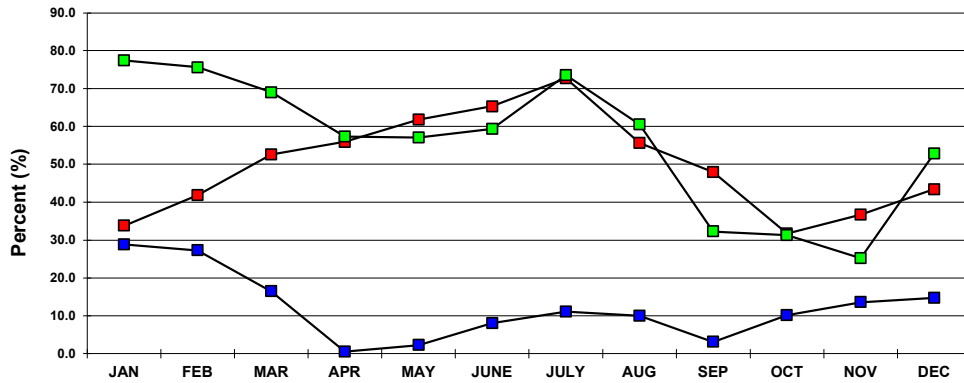
Notes:

Occupancy Rate equals reported number of room nights occupied as a percentage of reported room nights available. Percentage point change equals the absolute difference between current month and same month one year prior. Data subject to revision.

**U.S.V.I. OCCUPANCY RATES  
2018, 2019 AND 2020 YTD**



**ST. THOMAS/ST. JOHN OCCUPANCY  
2018, 2019 AND 2020 YTD**



**ST. CROIX OCCUPANCY RATES  
2018, 2019 AND 2020 YTD**

