

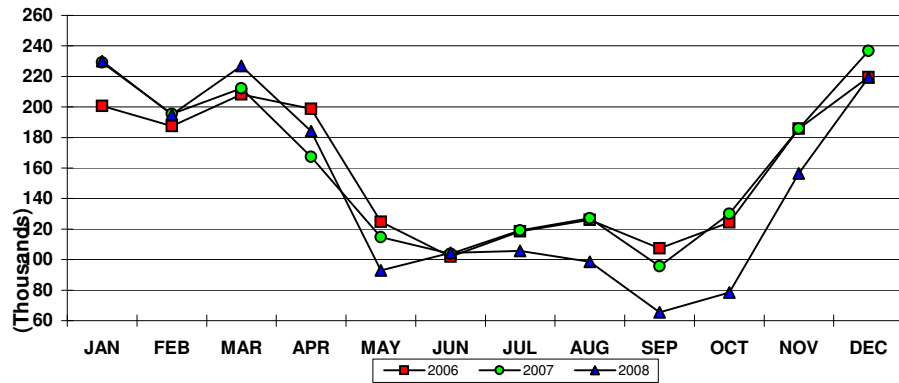
CRUISE PASSENGER ARRIVALS - U.S. Virgin Islands  
Year To Date, Monthly, Quarterly and Annual Totals  
January 2007 to December 2008

Period	ST. THOMAS/ST. JOHN			ST. CROIX			U.S.V.I., TOTAL		
	2007	2008	Percent Change	2007	2008	Percent Change	2007	2008	Percent Change
<b>YEAR TO DATE:</b>									
DECEMBER	1,917,371	1,754,557	-8.5	7,146	2,510	-	1,917,878	1,757,067	-8.4
<b>MONTHLY TOTAL:</b>									
January	229,256	228,222	-0.5	194	1,876	-	229,450	230,098	0.3
February	195,526	194,928	-0.3	2,091	0	-100.0	195,526	194,928	-0.3
March	212,151	226,876	6.9	4,548	0	-100.0	212,151	226,876	6.9
April	167,408	184,125	10.0	0	0	-	167,408	184,125	10.0
May	114,689	92,836	-19.1	0	0	-	114,689	92,836	-19.1
June	103,866	104,546	0.7	0	0	-	103,866	104,546	0.7
July	119,208	105,622	-11.4	0	0	-	119,208	105,622	-11.4
August	127,081	98,503	-22.5	0	0	-	127,081	98,503	-22.5
September	95,632	65,377	-31.6	0	0	-	95,632	65,377	-31.6
October	130,043	78,362	-39.7	0	0	-	130,043	78,362	-39.7
November	185,857	155,791	-16.2	313	634	102.6	186,170	156,425	-16.0
December	236,654	219,369	-7.3	0	0	-	236,654	219,369	-7.3
<b>QUARTER:</b>									
First	636,933	650,026	2.1	6,833	1,876	-72.5	637,127	651,902	2.3
Second	385,963	381,507	-1.2	0	0	-	385,963	381,507	-1.2
Third	341,921	269,502	-21.2	0	0	-	341,921	269,502	-21.2
Fourth	552,554	453,522	-17.9	313	634	102.6	552,867	454,156	-17.9
<b>ANNUAL TOTAL:</b>	<b>1,917,371</b>	<b>1,754,557</b>	<b>-8.5</b>	<b>7,146</b>	<b>2,510</b>	<b>-64.9</b>	<b>1,917,878</b>	<b>1,757,067</b>	<b>-8.4</b>

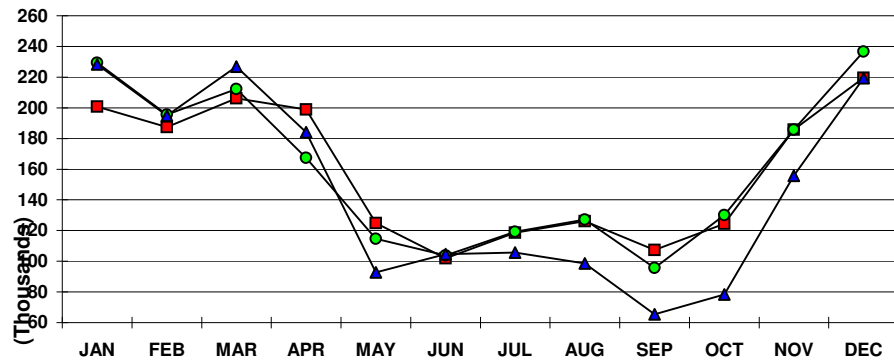
Notes:

Totals by island include first and second port of entry arrivals. Total arrivals for the U.S.V.I. include first territorial port of entry only; passengers visiting more than one U.S. Virgin Island during the same cruise are only counted once in the U.S.V.I. total. Consequently, the U.S.V.I. total will always be less than or equal to the sum of the two island totals as indicated. Data subject to revision.

**U.S.V.I. CRUISE PASSENGERS**  
2006, 2007 AND 2008 YTD



**ST. THOMAS/ST. JOHN CRUISE PASSENGERS**  
2006, 2007 AND 2008 YTD



**ST. CROIX CRUISE PASSENGERS**  
2006, 2007 AND 2008 YTD

