

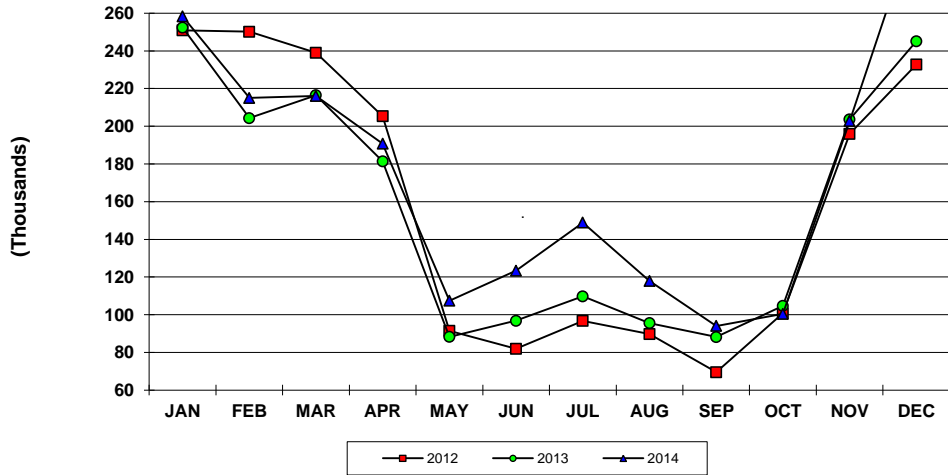
CRUISE PASSENGER ARRIVALS - U.S. Virgin Islands
Year To Date, Monthly, Quarterly and Annual Totals
January 2013 to December 2014

Period	ST. THOMAS/ST. JOHN			ST. CROIX			U.S.V.I., TOTAL		
	2013	2014	Percent Change	2013	2014	Percent Change	2013	2014	Percent Change
YEAR TO DATE:									
DECEMBER	1,886,647	1,979,926	4.9	116,436	127,238	9.3	1,998,579	2,083,890	4.3
MONTHLY TOTAL:									
January	252,389	247,199	-2.1	17,677	15,646	-11.5	270,066	258,399	-4.3
February	204,302	196,194	-4.0	20,036	23,109	15.3	224,338	215,001	-4.2
March	216,456	200,745	-7.3	18,158	22,048	21.4	234,614	216,117	-7.9
April	181,424	184,953	1.9	10,566	8,298	-21.5	191,990	190,801	-0.6
May	88,283	107,436	21.7	2,234	2,262	1.3	90,517	107,436	18.7
June	96,832	118,619	22.5	4,914	4,833	-1.6	101,746	123,452	21.3
July	109,727	146,418	33.4	2,490	5,417	117.6	112,217	148,897	32.7
August	95,534	113,437	18.7	2,444	4,700	92.3	97,978	117,937	20.4
September	88,204	91,806	4.1	4,388	2,258	-48.5	92,592	94,064	1.6
October	104,759	93,978	-10.3	6,383	6,551	2.6	111,142	100,529	-9.5
November	203,637	191,839	-5.8	11,373	11,043	-2.9	215,010	202,882	-5.6
December	245,100	287,302	17.2	15,773	21,073	33.6	256,369	308,375	20.3
QUARTER:									
First	673,147	644,138	-4.3	55,871	60,803	8.8	729,018	689,517	-5.4
Second	366,539	411,008	12.1	17,714	15,393	-13.1	384,253	421,689	9.7
Third	293,465	351,661	19.8	9,322	12,375	32.8	302,787	360,898	19.2
Fourth	553,496	573,119	3.5	33,529	38,667	15.3	582,521	611,786	5.0
ANNUAL TOTAL:	1,886,647	1,979,926	4.9	116,436	127,238	9.3	1,998,579	2,083,890	4.3

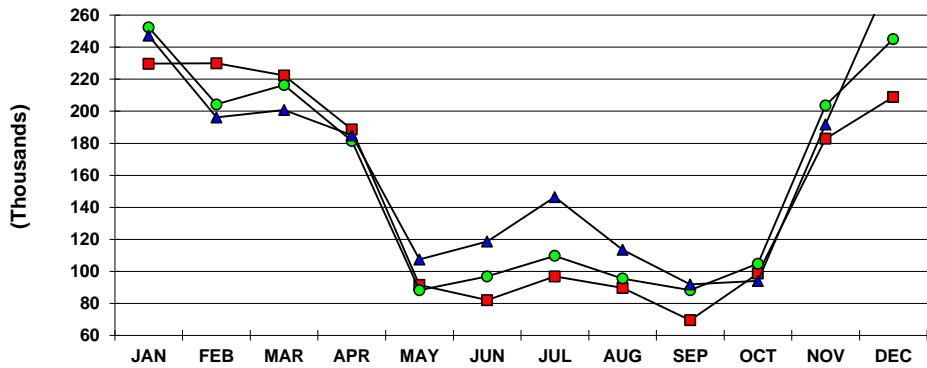
Notes:

Totals by island include first and second port of entry arrivals. Total arrivals for the U.S.V.I. include first territorial port of entry only; passengers visiting more than one U.S. Virgin Island during the same cruise are only counted once in the U.S.V.I. total. Consequently, the U.S.V.I. total will always be less than or equal to the sum of the two island totals as indicated. Data subject to revision.

**U.S.V.I. CRUISE PASSENGERS
2012, 2013 AND 2014 YTD**



**ST. THOMAS/ST. JOHN CRUISE PASSENGERS
2012, 2013 AND 2014 YTD**



**ST. CROIX CRUISE PASSENGERS
2012, 2013 AND 2014 YTD**

