

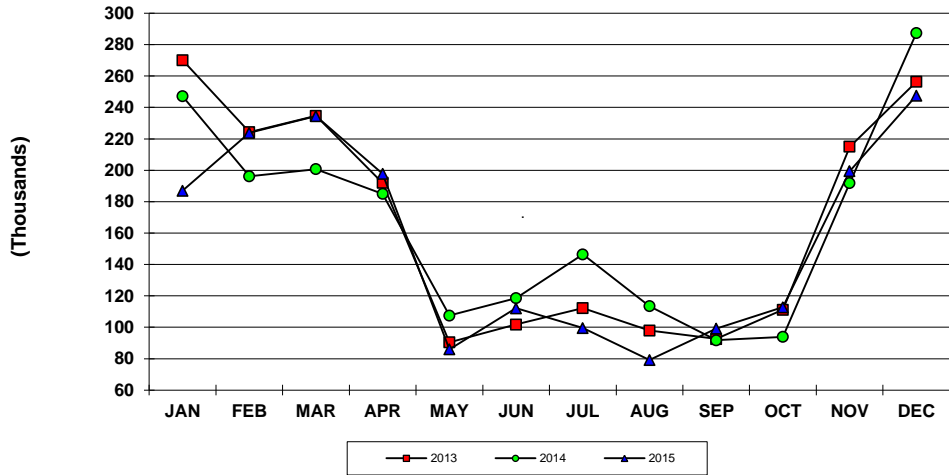
CRUISE PASSENGER ARRIVALS - U.S. Virgin Islands
Year To Date, Monthly, Quarterly and Annual Totals
January 2014 to December 2015

Period	ST. THOMAS/ST. JOHN			ST. CROIX			U.S.V.I., TOTAL		
	2014	2015	Percent Change	2014	2015	Percent Change	2014	2015	Percent Change
YEAR TO DATE:									
DECEMBER	1,979,926	1,747,596	-11.7	138,055	142,743	3.4	2,083,890	1,878,847	-9.8
MONTHLY TOTAL:									
January	247,199	155,562	-37.1	15,646	33,538	114.4	258,399	186,982	-27.6
February	196,194	210,642	7.4	23,109	15,920	-31.1	215,001	223,804	4.1
March	200,745	216,418	7.8	22,048	22,402	1.6	216,117	234,400	8.5
April	184,953	185,296	0.2	8,298	14,702	77.2	190,801	197,802	3.7
May	107,436	82,538	-23.2	2,262	3,454	52.7	107,436	85,992	-20.0
June	118,619	108,704	-8.4	4,833	3,445	-28.7	123,452	112,149	-9.2
July	146,418	92,270	-37.0	5,417	7,251	33.9	148,897	99,521	-33.2
August	113,437	75,634	-33.3	4,700	3,563	-24.2	117,937	79,197	-32.8
September	91,806	92,736	1.0	2,258	6,497	187.7	94,064	99,233	5.5
October	93,978	109,558	16.6	6,551	3,218	-50.9	100,529	112,776	12.2
November	191,839	184,952	-3.6	15,310	14,491	-5.3	202,882	199,443	-1.7
December	287,302	233,286	-18.8	27,623	14,262	-48.4	308,375	247,548	-19.7
QUARTER:									
First	644,138	582,622	-9.6	60,803	71,860	18.2	689,517	645,186	-6.4
Second	411,008	376,538	-8.4	15,393	21,601	40.3	421,689	395,943	-6.1
Third	351,661	260,640	-25.9	12,375	17,311	39.9	360,898	277,951	-23.0
Fourth	573,119	527,796	-7.9	49,484	31,971	-35.4	611,786	559,767	-8.5
ANNUAL TOTAL:	1,979,926	1,747,596	-11.7	138,055	142,743	3.4	2,083,890	1,878,847	-9.8

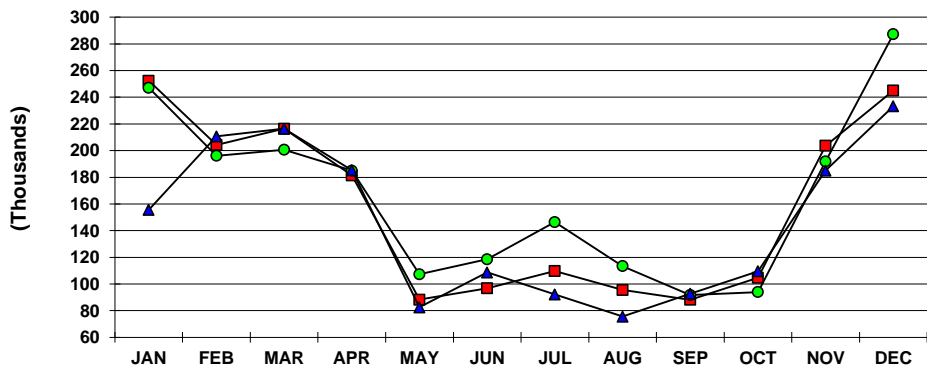
Notes:

Totals by island include first and second port of entry arrivals. Total arrivals for the U.S.V.I. include first territorial port of entry only; passengers visiting more than one U.S. Virgin Island during the same cruise are only counted once in the U.S.V.I. total. Consequently, the U.S.V.I. total will always be less than or equal to the sum of the two island totals as indicated. Data subject to revision.

**U.S.V.I. CRUISE PASSENGERS
2013, 2014 AND 2015 YTD**



**ST. THOMAS/ST. JOHN CRUISE PASSENGERS
2013, 2014 AND 2015 YTD**



**ST. CROIX CRUISE PASSENGERS
2013, 2014 AND 2015 YTD**

