

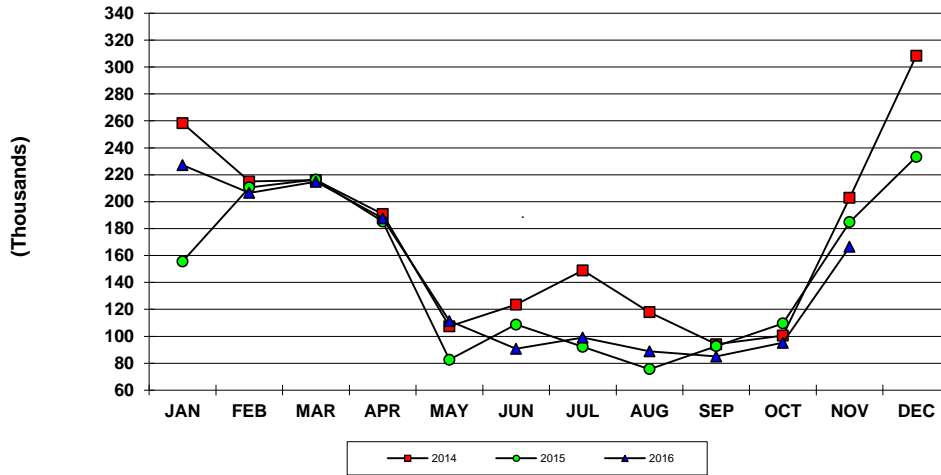
CRUISE PASSENGER ARRIVALS - U.S. Virgin Islands
Year To Date, Monthly, Quarterly and Annual Totals
January 2015 to December 2016

Period	ST. THOMAS/ST. JOHN			ST. CROIX			U.S.V.I., TOTAL		
	2015	2016	Percent Change	2015	2016	Percent Change	2015	2016	Percent Change
YEAR TO DATE:									
DECEMBER	1,747,596	1,694,058	-3.1	159,353	110,161	-30.9	1,878,847	1,776,735	-5.4
MONTHLY TOTAL:									
January	155,562	210,685	35.4	33,538	27,282	-18.7	186,982	227,156	21.5
February	210,642	190,738	-9.4	15,920	22,404	40.7	223,804	206,594	-7.7
March	216,418	203,149	-6.1	22,402	11,629	-48.1	234,400	214,778	-8.4
April	185,296	179,676	-3.0	14,702	14,821	0.8	197,802	187,660	-5.1
May	82,538	111,383	34.9	3,454	3,288	-4.8	85,992	111,383	29.5
June	108,704	90,638	-16.6	3,445	0	-	112,149	90,638	-19.2
July	92,270	99,058	7.4	7,251	-	-	99,521	99,058	-0.5
August	75,634	88,877	17.5	3,563	-	-	79,197	88,877	12.2
September	92,736	81,577	-12.0	6,497	3,380	-48.0	99,233	84,957	-14.4
October	109,558	93,053	-15.1	3,218	2,162	-32.8	112,776	95,215	-15.6
November	184,952	155,245	-16.1	21,142	11,258	-46.8	199,443	166,503	-16.5
December	233,286	189,979	-18.6	24,221	13,937	-42.5	247,548	203,916	-17.6
QUARTER:									
First	582,622	604,572	3.8	71,860	61,315	-14.7	645,186	648,528	0.5
Second	376,538	381,697	1.4	21,601	18,109	-16.2	395,943	389,681	-1.6
Third	260,640	269,512	3.4	17,311	3,380	-80.5	277,951	272,892	-1.8
Fourth	527,796	438,277	-17.0	48,581	27,357	-43.7	559,767	465,634	-16.8
ANNUAL TOTAL:	1,747,596	1,694,058	-3.1	159,353	110,161	-30.9	1,878,847	1,776,735	-5.4

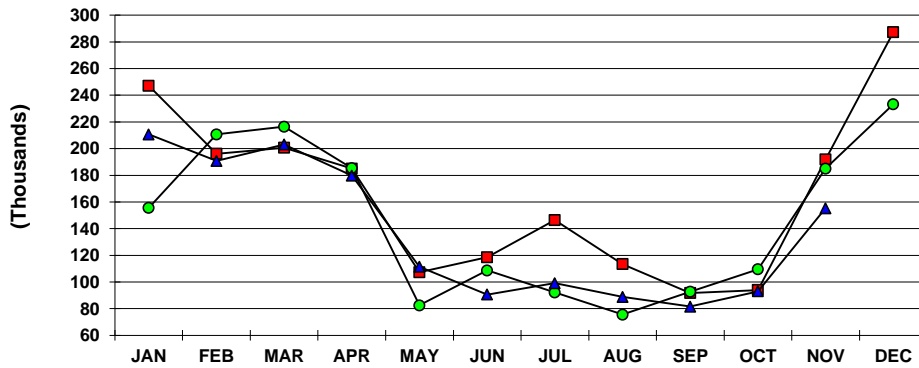
Notes:

Totals by island include first and second port of entry arrivals. Total arrivals for the U.S.V.I. include first territorial port of entry only; passengers visiting more than one U.S. Virgin Island during the same cruise are only counted once in the U.S.V.I. total. Consequently, the U.S.V.I. total will always be less than or equal to the sum of the two island totals as indicated. Data subject to revision.

**U.S.V.I. CRUISE PASSENGERS
2014, 2015 AND 2016 YTD**



**ST. THOMAS/ST. JOHN CRUISE PASSENGERS
2014, 2015 AND 2016 YTD**



**ST. CROIX CRUISE PASSENGERS
2014, 2015 AND 2016 YTD**

