

## CRUISE PASSENGER ARRIVALS - U.S. Virgin Islands

Year To Date, Monthly, Quarterly and Annual Totals

**January 2020 to December 2021**

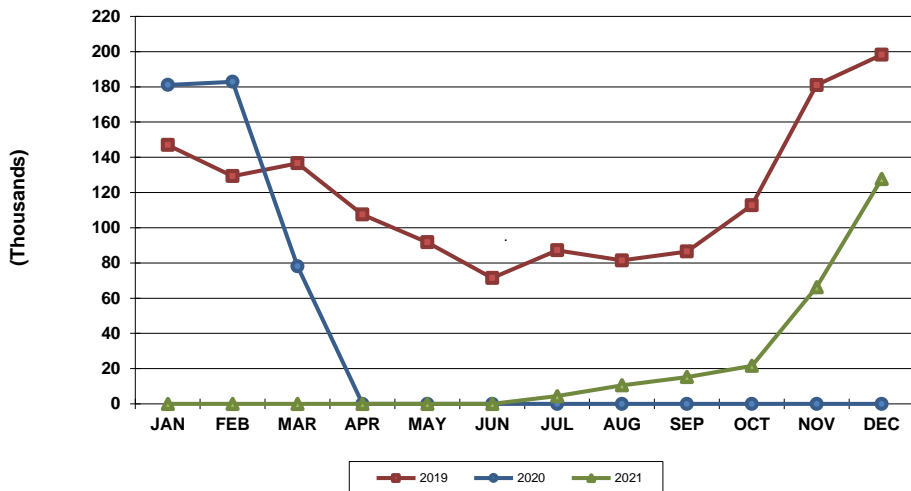
[webmaster@usviber.org](mailto:webmaster@usviber.org)  
[www.usviber.org](http://www.usviber.org)

Period	ST. THOMAS/ST. JOHN			ST. CROIX			U.S.V.I., TOTAL		
	2020	2021	Percent Change	2020	2021	Percent Change	2020	2021	Percent Change
<b>YEAR TO DATE:</b>									
DECEMBER	424,583	224,698	-47.1	17,444	<b>20,997</b>	20.4	442,027	<b>245,695</b>	-44.4
<b>MONTHLY TOTAL:</b>									
January	171,184	0	-100.0	9,904	0	-100.0	181,088	0	-100.0
February	175,321	0	-100.0	7,540	0	-100.0	182,861	0	-100.0
March	78,078	0	-100.0	0	0	0.0	78,078	0	-100.0
April	0	0	0.0	0	0	0.0	0	0	0.0
May	0	0	0.0	0	0	0.0	0	0	0.0
June	0	0	0.0	0	0	0.0	0	0	0.0
July	0	4,374	-	0	-	-	0	4,374	-
August	0	9,330	-	0	1,221	-	0	10,551	-
September	0	12,649	-	0	2,620	-	0	15,269	-
October	0	21,575	-	0	0	-	0	21,575	-
November	0	59,980	-	0	6,306	-	0	66,286	-
December	0	116,790	-	0	10850	-	0	127,640	-
<b>QUARTER:</b>									
First	424,583	0	-100.0	17,444	0	-100.0	442,027	0	-100.0
Second	0	0	-	0	0	-	0	0	-
Third	0	26,353	-	0	3,841	-	0	30,194	-
Fourth	0	198,345	-	0	17,156	-	0	215,501	-
<b>ANNUAL TOTAL:</b>	424,583	224,698	-47.1	17,444	20,997	20.4	442,027	245,695	-44.4

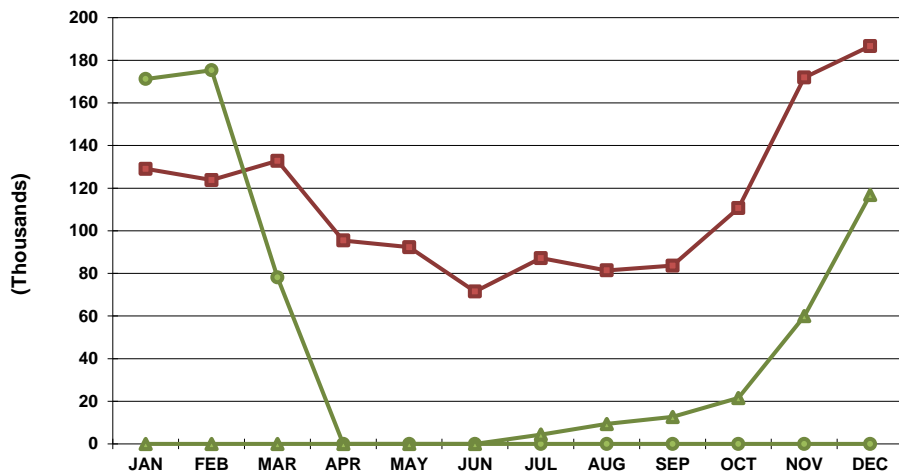
**Notes:**

Totals by island include first and second port of entry arrivals. Total arrivals for the U.S.V.I. include first territorial port of entry only; passengers visiting more than one U.S. Virgin Island during the same cruise are only counted once in the U.S.V.I. total. Consequently, the U.S.V.I. total will always be less than or equal to the sum of the two island totals as indicated. Data subject to revision.

**U.S.V.I. CRUISE PASSENGERS  
2019, 2020 AND 2021 YTD**



**ST. THOMAS/ST. JOHN CRUISE PASSENGERS  
2019, 2020 AND 2021 YTD**



**ST. CROIX CRUISE PASSENGERS  
2019, 2020 AND 2021 YTD**

