

CRUISE SHIP CALLS- U.S. Virgin Islands
Year To Date, Monthly, Quarterly and Annual Totals
January 2005 to December 2006

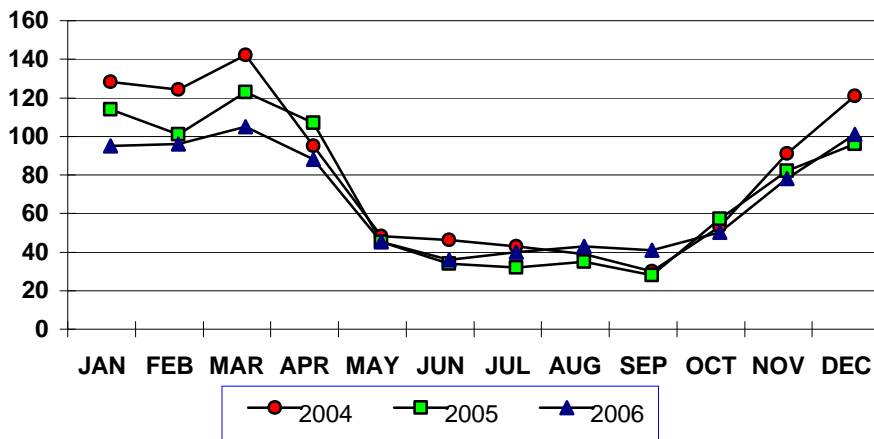
Period	ST. THOMAS/ST. JOHN			ST. CROIX			U.S.V.I., TOTAL		
	2005	2006	Percent Change	2005	2006	Percent Change	2005	2006	Percent Change
YEAR TO DATE:									
DECEMBER	814	776	-4.7	34	25	-26.5	818	782	-4.4
MONTH:									
January	111	92	-17.1	7	4	-42.9	111	92	-17.1
February	98	92	-6.1	5	4	-20.0	98	93	-5.1
March	118	100	-15.3	9	8	-11.1	120	102	-15.0
April	104	82	-21.2	4	7	75.0	104	85	-18.3
May	42	42	0.0	0	0	-	42	42	0.0
June	31	33	6.5	0	0	-	31	33	6.5
July	29	37	27.6	0	0	-	29	37	27.6
August	32	40	25.0	0	0	-	32	40	25.0
September	25	38	52.0	0	0	-	25	38	52.0
October	54	47	-13.0	0	0	-	54	47	-13.0
November	79	75	-5.1	4	1	-75.0	79	75	-5.1
December	91	98	7.7	5	1	-80.0	93	98	5.4
QUARTER:									
First	327	284	-13.1	21	16	-23.8	329	287	-12.8
Second	177	157	-11.3	4	7	75.0	177	160	-9.6
Third	86	115	33.7	0	0	-	86	115	33.7
Fourth	224	220	-1.8	9	2	-77.8	226	220	-2.7
ANNUAL TOTAL:	814	776	-4.7	34	25	-26.5	818	782	-4.4

Notes:

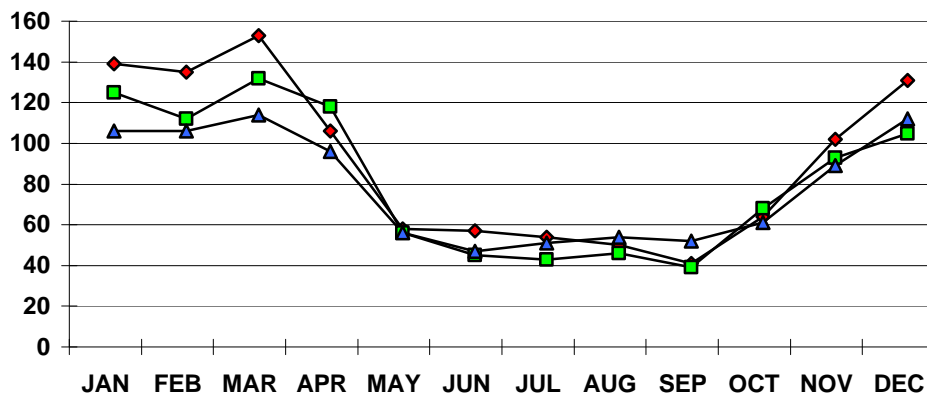
Data subject to revision.

::

**U.S.V.I. CRUISE CALLS
2004, 2005 AND 2006 YTD**



**ST. THOMAS/ST. JOHN CRUISE CALLS
2004, 2005 AND 2006 YTD**



**ST. CROIX CRUISE CALLS
2004, 2005 AND 2006 YTD**

