

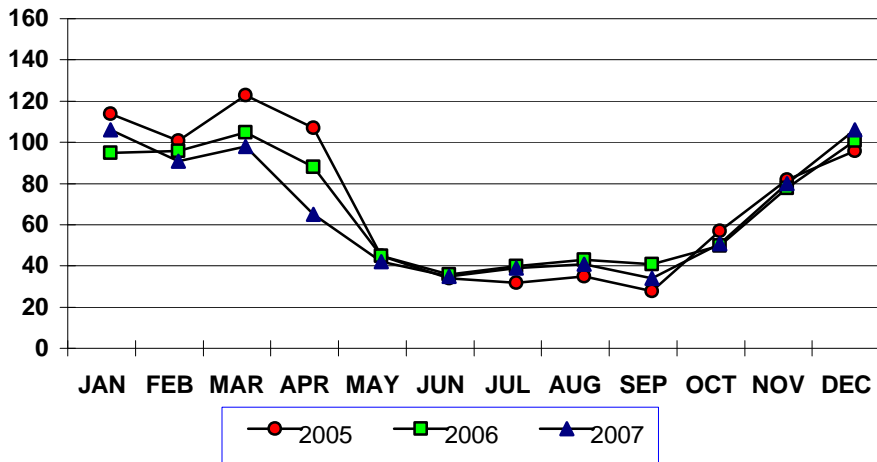
CRUISE SHIP CALLS- U.S. Virgin Islands  
 Year To Date, Monthly, Quarterly and Annual Totals  
 January 2006 to December 2007

Period	ST. THOMAS/ST. JOHN			ST. CROIX			U.S.V.I., TOTAL		
	2006	2007	Percent Change	2006	2007	Percent Change	2006	2007	Percent Change
YEAR TO DATE:									
DECEMBER	776	750	-3.4	25	6	-26.5	782	752	-3.8
MONTH:									
January	92	102	10.9	4	1	-75.0	92	103	12.0
February	92	88	-4.3	4	1	-75.0	93	88	-5.4
March	100	95	-5.0	8	3	-62.5	102	95	-6.9
April	82	62	-24.4	7	0	-100.0	85	62	-27.1
May	42	39	-7.1	0	0	-	42	39	-7.1
June	33	32	-3.0	0	0	-	33	32	-3.0
July	37	36	-2.7	0	0	-	37	36	-2.7
August	40	38	-5.0	0	0	-	40	38	-5.0
September	38	31	-18.4	0	0	-	38	31	-18.4
October	47	48	2.1	0	0	-	47	48	2.1
November	75	76	1.3	1	1	0.0	75	77	2.7
December	98	103	5.1	1	0	-100.0	98	103	5.1
QUARTER:									
First	284	285	0.4	16	5	-68.8	287	286	-0.3
Second	157	133	-15.3	7	0	-100.0	160	133	-16.9
Third	115	105	-8.7	0	0	-	115	105	-8.7
Fourth	220	227	3.2	2	1	-50.0	220	228	3.6
ANNUAL TOTAL:	776	750	-3.4	25	6	-76.0	782	752	-3.8

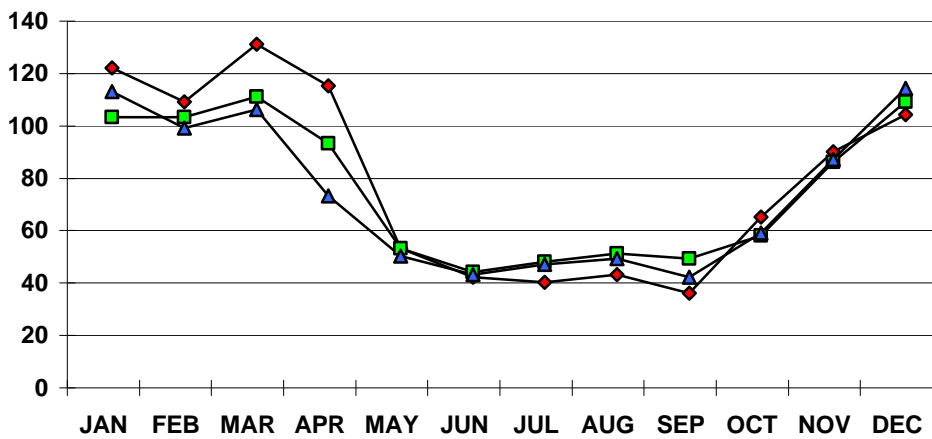
Notes:  
 Data subject to revision.

::

**U.S.V.I. CRUISE CALLS  
2005, 2006 AND 2007 YTD**



**ST. THOMAS/ST. JOHN CRUISE CALLS  
2005, 2006 AND 2007 YTD**



**ST. CROIX CRUISE CALLS  
2004, 2005 AND 2006 YTD**

