

TOTAL CONSTRUCTION PERMIT VALUE - U.S. Virgin Islands

Year To Date, Monthly, Quarterly and Annual Totals

In Thousands of Dollars, January 2001 to December 2002

Period	ST. THOMAS/ST. JOHN			ST. CROIX			U.S.V.I., TOTAL		
	2001	2002	Percent Change	2001	2002	Percent Change	2001	2002	Percent Change

YEAR TO DATE:

DECEMBER	106,662	190,539	78.6	57,595	68,769	19.4	164,257	259,308	57.9
----------	---------	---------	------	--------	--------	------	---------	---------	------

MONTH:

January	18,091	8,483	-53.1	4,077	5,438	33.4	22,167	13,920	-37.2
February	5,302	7,236	36.5	4,118	3,887	-5.6	9,420	11,123	18.1
March	9,786	6,576	-32.8	7,085	6,131	-13.5	16,871	12,706	-24.7
April	4,625	24,100	421.1	5,636	9,943	76.4	10,262	34,043	231.7
May	9,176	21,767	137.2	7,873	8,642	9.8	17,048	30,409	78.4
June	6,787	31,556	364.9	4,513	4,512	0.0	11,301	36,068	219.2
July	5,764	10,190	76.8	4,152	4,631	11.5	9,916	14,821	49.5
August	7,341	12,312	67.7	2,462	3,648	48.2	9,803	15,960	62.8
September	13,263	16,462	24.1	4,907	8,789	79.1	18,169	25,251	39.0
October	7,464	12,896	72.8	6,459	3,641	-43.6	13,923	16,537	18.8
November	4,595	13,611	196.2	2,484	3,922	57.8	7,079	17,533	147.7
December	14,468	25,350	75.2	3,831	5,587	45.8	18,299	30,937	69.1

QUARTER:

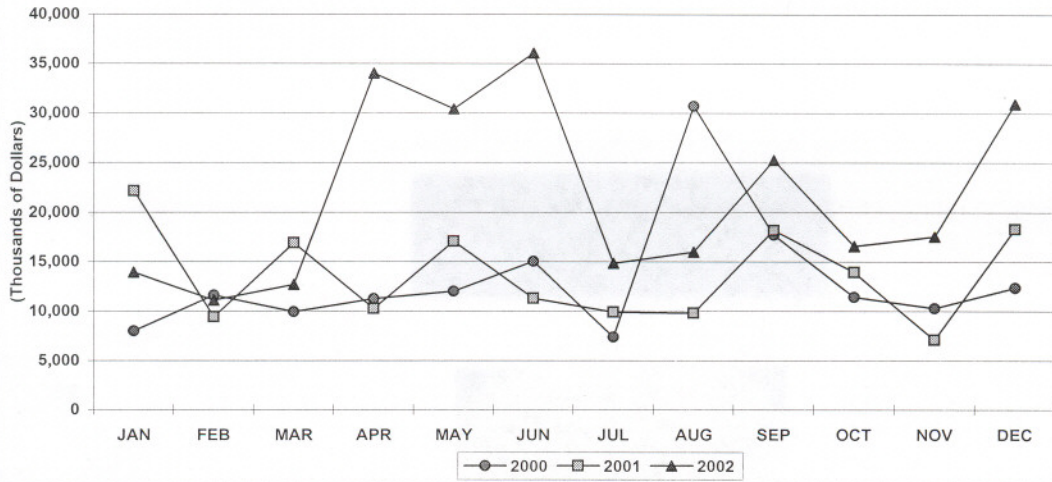
First	33,179	22,294	-32.8	15,279	15,455	1.2	48,458	37,749	-22.1
Second	20,588	77,423	276.1	18,022	23,097	28.2	38,610	100,520	160.3
Third	26,368	38,964	47.8	11,520	17,068	48.2	37,888	56,032	47.9
Fourth	26,527	51,858	95.5	12,774	13,149	2.9	39,301	65,007	65.4

ANNUAL TOTAL:	106,662	190,539	78.6	57,595	68,769	19.4	164,257	259,308	57.9
---------------	---------	---------	------	--------	--------	------	---------	---------	------

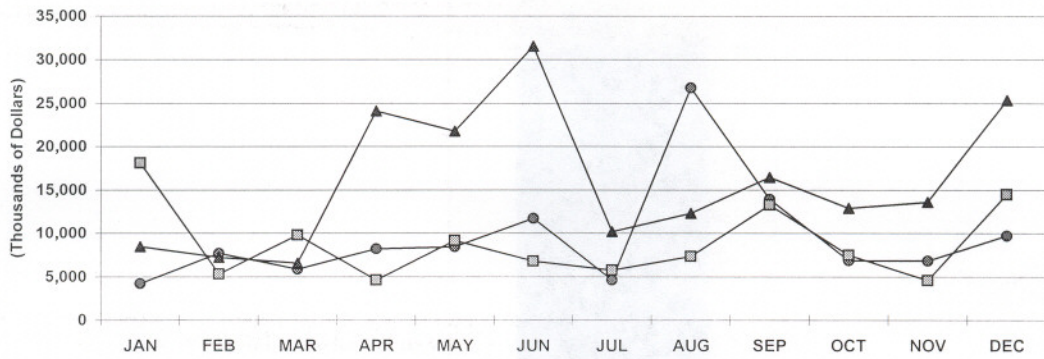
Notes:

Value of all types of intended building construction. Compiled from Dept. of Planning and Natural Resources approved permits for which estimated value is available. Construction relating to Hess Oil Virgin Islands is exempt from the permit process. [-] denotes data unavailable or not presented due to extreme fluctuations of percent changes. Data subject to revision.

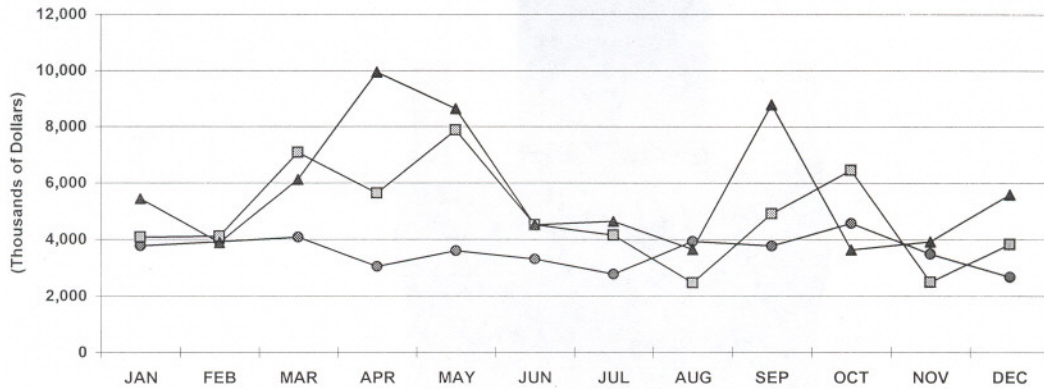
U.S.V.I. TOTAL PERMIT VALUE
2000, 2001 AND 2002 YTD



ST. THOMAS/JOHN TOTAL PERMIT VALUE
2000, 2001 AND 2002 YTD



ST. CROIX TOTAL PERMIT VALUE
2000, 2001 AND 2002 YTD



PRIVATE RESIDENTIAL CONSTRUCTION PERMITS VALUE - U.S. Virgin Islands

Year To Date, Monthly, Quarterly and Annual Totals

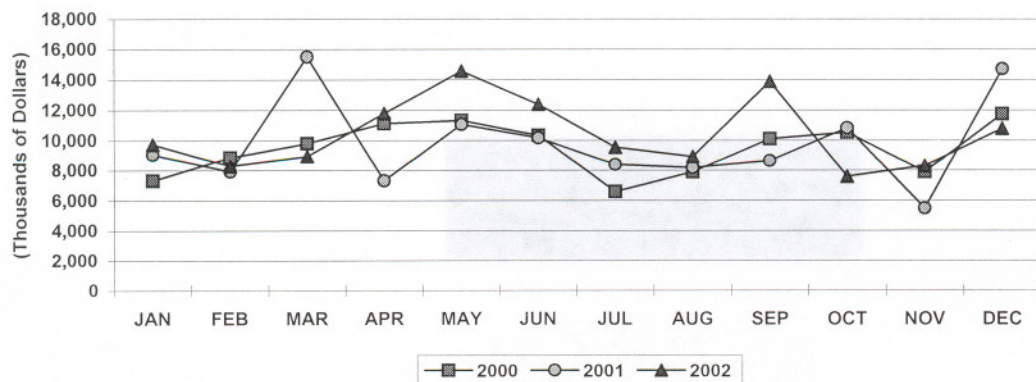
In Thousands of Dollars, January 2001 to December 2002

Period	ST. THOMAS/ST. JOHN			ST. CROIX			U.S.V.I., TOTAL		
	2001	2002	Percent Change	2001	2002	Percent Change	2001	2002	Percent Change
YEAR TO DATE:									
DECEMBER	72,231	74,942	3.8	45,062	49,798	10.5	117,293	124,739	6.3
MONTH:									
January	6,693	5,481	-18.1	2,369	4,257	79.7	9,062	9,738	7.5
February	4,148	4,994	20.4	3,769	3,296	-12.5	7,917	8,290	4.7
March	8,677	3,603	-58.5	6,832	5,337	-21.9	15,509	8,940	-42.4
April	4,455	8,089	81.6	2,878	3,696	28.4	7,333	11,785	60.7
May	4,602	9,879	114.7	6,457	4,682	-27.5	11,058	14,561	31.7
June	6,699	8,031	19.9	3,460	4,343	25.5	10,159	12,374	21.8
July	5,327	6,320	18.6	3,070	3,216	4.8	8,397	9,536	13.6
August	6,208	5,559	-10.5	1,969	3,369	71.2	8,177	8,928	9.2
September	4,571	7,626	66.8	4,076	6,265	53.7	8,647	13,891	60.6
October	4,761	4,690	-1.5	6,059	2,914	-51.9	10,819	7,604	-29.7
November	4,495	4,831	7.5	997	3,484	249.5	5,492	8,316	51.4
December	11,596	5,838	-49.7	3,127	4,940	58.0	14,723	10,778	-26.8
QUARTER:									
First	19,518	14,078	-27.9	12,970	12,889	-0.6	32,488	26,967	-17.0
Second	15,756	26,000	65.0	12,795	12,721	-0.6	28,551	38,720	35.6
Third	16,106	19,504	21.1	9,115	12,850	41.0	25,220	32,354	28.3
Fourth	20,852	15,360	-26.3	10,182	11,338	11.3	31,034	26,697	-14.0
ANNUAL TOTAL:	72,231	74,942	3.8	45,062	49,798	10.5	117,293	124,739	6.3

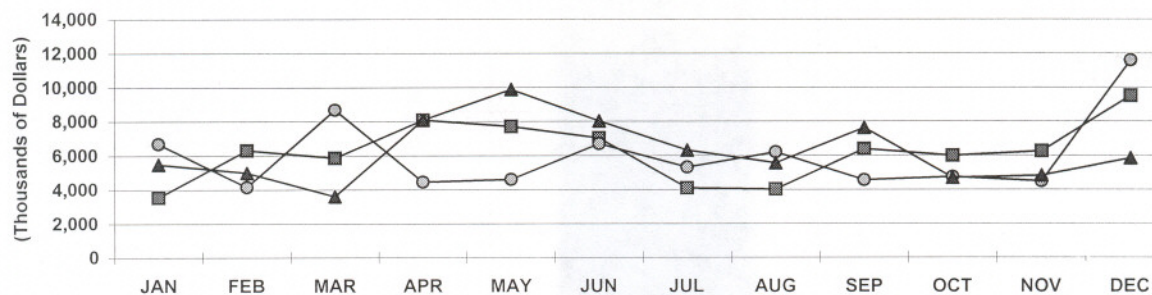
Notes:

Value of intended construction of new housekeeping residences as well as additions and alterations to existing residences. Construction relating to hotels and other structures intended for use as transient accommodation are not included. Compiled from Dept. of Planning and Natural Resources approved permits for which estimated value is available. [-] denotes data unavailable or not presented due to extreme fluctuations of percent changes. Data subject to revision.

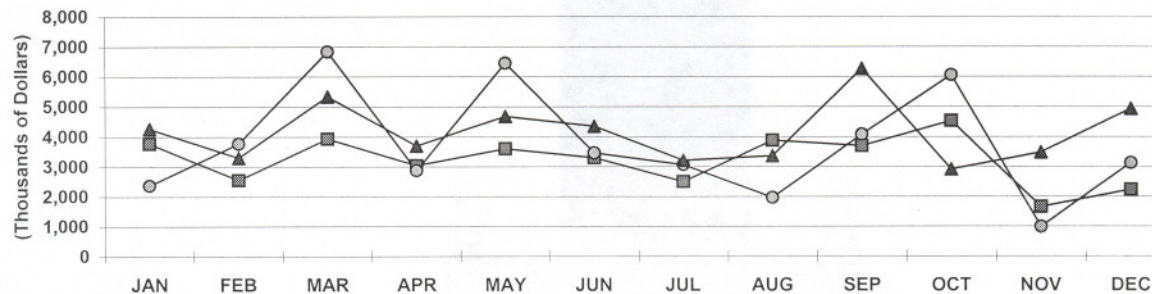
U.S.V.I PRIVATE RES. PERMIT VALUE
2000, 2001 AND 2002 YTD



ST. THOMAS/JOHN PRIV. RES. PERMIT VALUE
2000, 2001 AND 2002 YTD



ST. CROIX PRIVATE RES. PERMIT VALUE
2000, 2001 AND 2002 YTD



PUBLIC CONSTRUCTION PERMIT VALUE - U.S. Virgin Islands

Year To Date, Monthly, Quarterly and Annual Totals

In Thousands of Dollars, January 2001 to December 2002

Period	ST. THOMAS/ST. JOHN			ST. CROIX			U.S.V.I., TOTAL		
	2001	2002	Percent Change	2001	2002	Percent Change	2001	2002	Percent Change
YEAR TO DATE:									
DECEMBER	13,989	95,592	583.3	2,813	14,680	-	16,802	110,272	556.3
MONTH:									
January	10,062	1,693	-83.2	900	904	0.4	10,962	2,597	-76.3
February	954	1,277	33.8	0	350	-	954	1,627	70.5
March	50	2,958	-	43	0	-	93	2,958	-
April	2	12,701	-	367	6,021	-	369	18,722	-
May	500	10,977	-	0	3,900	-	500	14,877	-
June	0	22,192	-	90	0	-	90	22,192	-
July	0	2,369	-	0	715	-	0	3,084	-
August	54	6,308	-	0	33	-	54	6,341	-
September	702	8,231	-	150	1,877	-	852	10,108	-
October	17	6,506	38171.5	0	595	-	17	7,101	41671.5
November	0	7,706	-	753	5	-99.3	753	7,711	924.0
December	1,649	12,675	668.7	510	280	-45.1	2,159	12,955	500.1
QUARTER:									
First	11,066	5,928	-46.4	943	1,254	-	12,009	7,182	-40.2
Second	502	45,870	-	457	9,921	-	959	55,791	-
Third	756	16,908	-	150	2,625	-	906	19,533	-
Fourth	1,666	26,887	1513.9	1,263	880	-30.3	2,929	27,767	848.0
ANNUAL TOTAL:	13,989	95,592	583.3	2,813	14,680	421.9	16,802	110,272	556.3

Notes:

Value of intended Federal or Territory government building construction. Compiled from Dept. of Planning and Natural Resources approved permits for which estimated value is available. [-] denotes data unavailable or not present due to extreme fluctuations of percent changes. Data subject to revision.

PRIVATE NON-RESIDENTIAL CONSTRUCTION PERMIT VALUE - U.S. Virgin Islands

Year To Date, Monthly, Quarterly and Annual Totals

In Thousands of Dollars, January 2001 to December 2002

Period	ST. THOMAS/ST. JOHN			ST. CROIX			U.S.V.I., TOTAL		
	2001	2002	Percent Change	2001	2002	Percent Change	2001	2002	Percent Change
YEAR TO DATE:									
DECEMBER	7,889	20,006	153.6	6,315	4,292	-32.0	14,204	24,297	71.1
MONTH:									
January	1,011	1,309	29.4	152	277	82.2	1,163	1,586	36.3
February	63	965	-	255	241	-5.5	318	1,206	279.2
March	720	15	-	120	794	561.7	840	809	-3.8
April	123	3,310	-	1,645	226	-86.3	1,768	3,536	100.0
May	3,705	911	-75.4	1,242	60	-95.2	4,947	971	-80.4
June	37	1,333	-	784	170	-78.4	821	1,503	82.9
July	134	1,502	-	898	700	-22.0	1,032	2,202	113.4
August	119	445	273.7	420	246	-41.4	539	691	28.2
September	300	606	101.8	630	647	2.7	930	1,253	34.7
October	1,539	1,700	10.5	79	132	67.1	1,618	1,832	13.2
November	0	1,074	-	0	432	-	0	1,506	-
December	137	6,837	4890.3	90	367	307.8	227	7,204	3073.4
QUARTER:									
First	1,795	2,289	27.5	527	1,312	149.0	2,322	3,601	55.1
Second	3,865	5,554	43.7	3,671	456	-87.6	7,536	6,009	-20.3
Third	553	2,552	361.5	1,948	1,593	-18.2	2,501	4,145	65.7
Fourth	1,676	9,611	473.4	169	931	450.9	1,845	10,542	471.4
ANNUAL TOTAL:	7,889	20,006	153.6	6,315	4,292	-32.0	14,204	24,297	71.1

Notes:

Value of intended private building construction exclusive of housekeeping residences. Includes hotels and other intended for use as transient accommodations. Compiled from Dept. of Planning and Natural Resources approved permits for which estimated value is available. Construction relating to Hess Oil Virgin Islands is exempt from the permit process. [-] denotes data not presented due to extreme fluctuations of percent changes. Data subject to revision.