

TOTAL CONSTRUCTION PERMIT VALUE - U.S. Virgin Islands

Year To Date, Monthly, Quarterly and Annual Totals

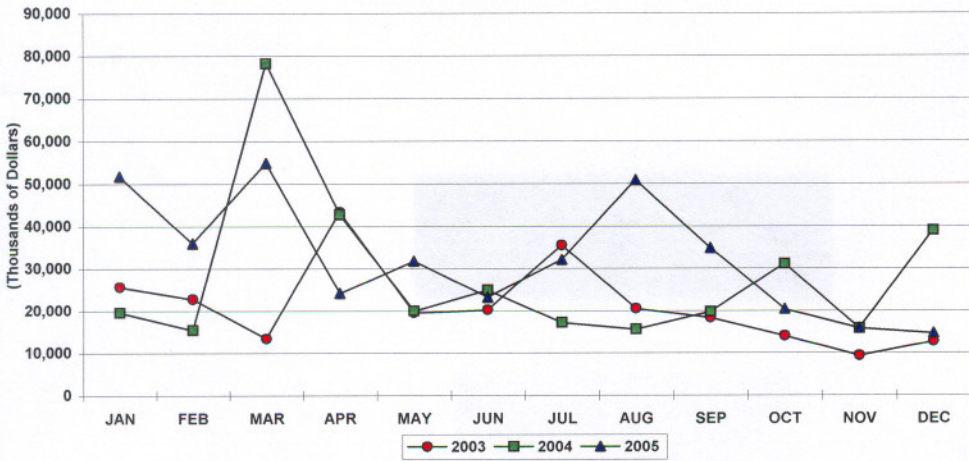
In Thousands of Dollars, January 2004 to December 2005

Period	ST. THOMAS/ST. JOHN			ST. CROIX			U.S.V.I., TOTAL		
	2004	2005	Percent Change	2004	2005	Percent Change	2004	2005	Percent Change
YEAR TO DATE:									
DECEMBER	210,214	274,267	30.5	129,222	115,910	-10.3	339,436	390,177	14.9
MONTH:									
January	16,407	45,911	179.8	3,232	5,816	79.9	19,639	51,727	163.4
February	9,387	29,786	217.3	6,109	6,158	0.8	15,496	35,945	132.0
March	45,655	23,509	-48.5	32,511	31,268	-3.8	78,166	54,776	-29.9
April	13,128	18,265	39.1	29,637	5,905	-80.1	42,765	24,170	-43.5
May	13,244	25,926	95.8	6,797	5,867	-13.7	20,041	31,793	58.6
June	17,286	16,223	-6.1	7,608	6,925	-9.0	24,894	23,148	-7.0
July	8,649	19,227	122.3	8,556	12,847	50.1	17,206	32,074	86.4
August	6,682	43,567	552.0	8,949	7,197	-19.6	15,631	50,763	224.8
September	13,874	23,439	68.9	5,892	11,393	93.4	19,765	34,832	76.2
October	26,101	11,410	-56.3	5,006	8,983	79.5	31,107	20,394	-34.4
November	8,155	10,758	31.9	7,615	5,091	-33.1	15,770	15,849	0.5
December	31,644	6,245	-80.3	7,312	8,462	15.7	38,956	14,707	-62.2
QUARTER:									
First	71,449	99,206	38.8	41,851	43,242	3.3	113,301	142,448	25.7
Second	43,658	60,415	38.4	44,042	18,696	-57.5	87,700	79,111	-9.8
Third	29,205	86,233	195.3	23,397	31,437	34.4	52,603	117,670	123.7
Fourth	65,901	28,414	-56.9	19,932	22,536	13.1	85,833	50,949	-40.6
ANNUAL TOTAL:	210,214	274,267	30.5	129,222	115,910	-10.3	339,436	390,177	14.9

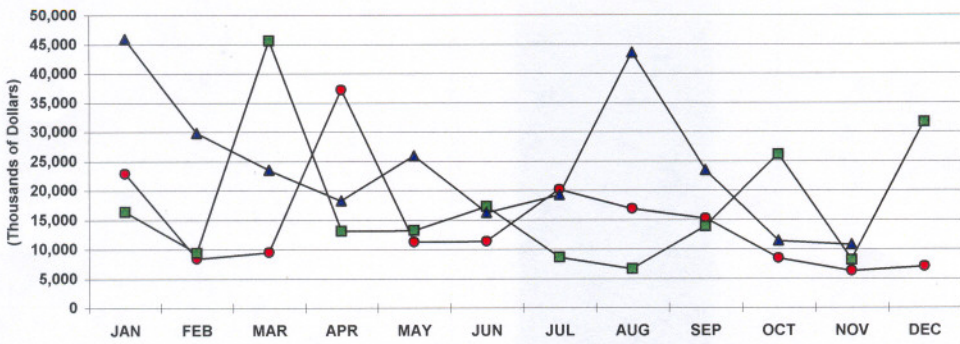
Notes:

Value of all types of intended building construction. Compiled from Dept. of Planning and Natural Resources approved permits for which estimated value is available. Construction relating to Hess Oil Virgin Islands is exempt from the permit process. [-] denotes data unavailable or not presented due to extreme fluctuations of percent changes. Data subject to revision.

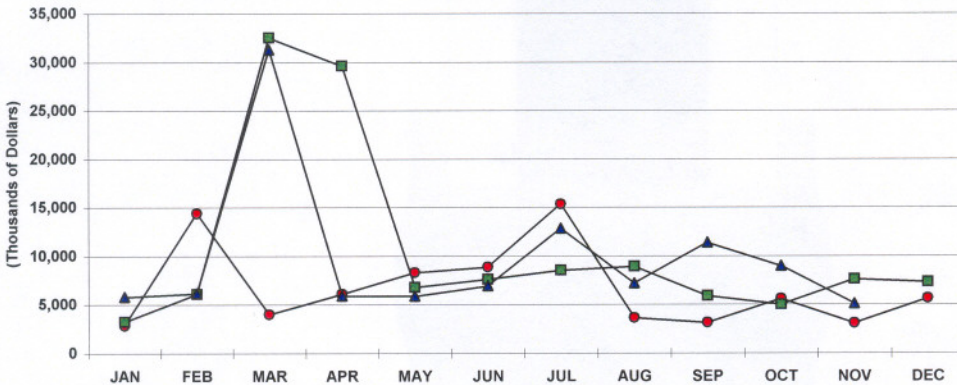
U.S.V.I. TOTAL PERMIT VALUE
2003, 2004 AND 2005 YTD



ST. THOMAS/JOHN TOTAL PERMIT VALUE
2003, 2004 AND 2005 YTD



ST. CROIX TOTAL PERMIT VALUE
2003, 2004 AND 2005 YTD



PRIVATE RESIDENTIAL CONSTRUCTION PERMITS VALUE - U.S. Virgin Islands

Year To Date, Monthly, Quarterly and Annual Totals

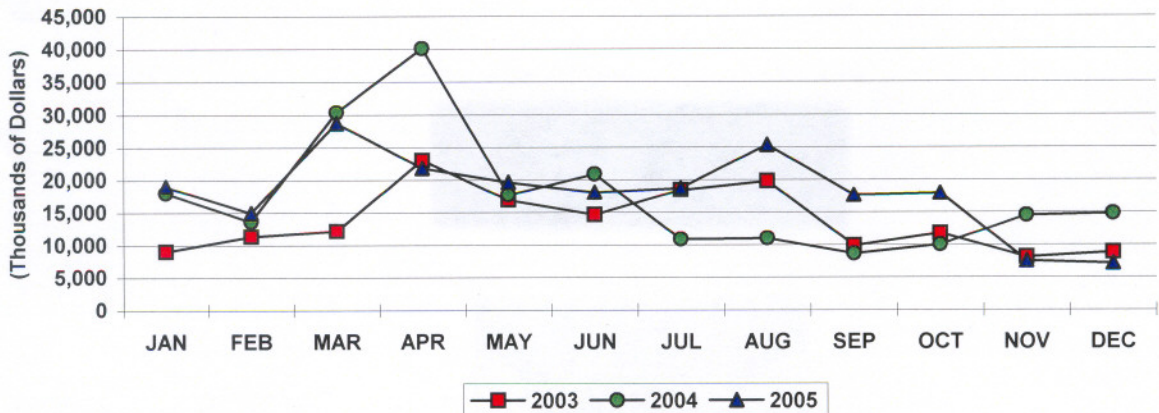
In Thousands of Dollars, January 2004 to December 2005

Period	ST. THOMAS/ST. JOHN			ST. CROIX			U.S.V.I., TOTAL		
	2004	2005	Percent Change	2004	2005	Percent Change	2004	2005	Percent Change
YEAR TO DATE:									
DECEMBER	121,635	148,493	22.1	89,025	68,100	-23.5	210,660	216,593	2.8
MONTH:									
January	15,015	14,755	-1.7	2,989	4,280	43.2	18,003	19,034	5.7
February	8,597	8,908	3.6	5,049	6,073	20.3	13,645	14,981	9.8
March	24,055	22,545	-6.3	6,326	6,158	-2.7	30,381	28,702	-5.5
April	11,149	17,062	53.0	28,937	4,732	-83.6	40,085	21,794	-45.6
May	12,536	13,882	10.7	5,185	5,783	11.5	17,721	19,665	11.0
June	14,246	11,211	-21.3	6,623	6,869	3.7	20,869	18,080	-13.4
July	4,940	14,052	184.5	5,917	4,688	-20.8	10,857	18,740	72.6
August	4,851	19,122	294.2	6,143	6,192	0.8	10,994	25,313	130.3
September	4,406	13,474	205.8	4,272	4,206	-1.5	8,678	17,680	103.7
October	5,457	9,962	82.5	4,594	7,991	74.0	10,051	17,953	78.6
November	7,371	2,498	-66.1	7,180	5,012	-30.2	14,551	7,510	-48.4
December	9,013	1,023	-88.7	5,812	6,117	5.2	14,825	7,140	-51.8
QUARTER:									
First	47,666	46,208	-3.1	14,363	16,510	14.9	62,029	62,718	1.1
Second	37,930	42,155	11.1	40,745	17,384	-57.3	78,675	59,539	-24.3
Third	14,197	46,648	228.6	16,332	15,086	-7.6	30,528	61,734	102.2
Fourth	21,842	13,483	-38.3	17,586	19,120	8.7	39,428	32,603	-17.3
ANNUAL TOTAL:	121,635	148,493	22.1	89,025	68,100	-23.5	210,660	216,593	2.8

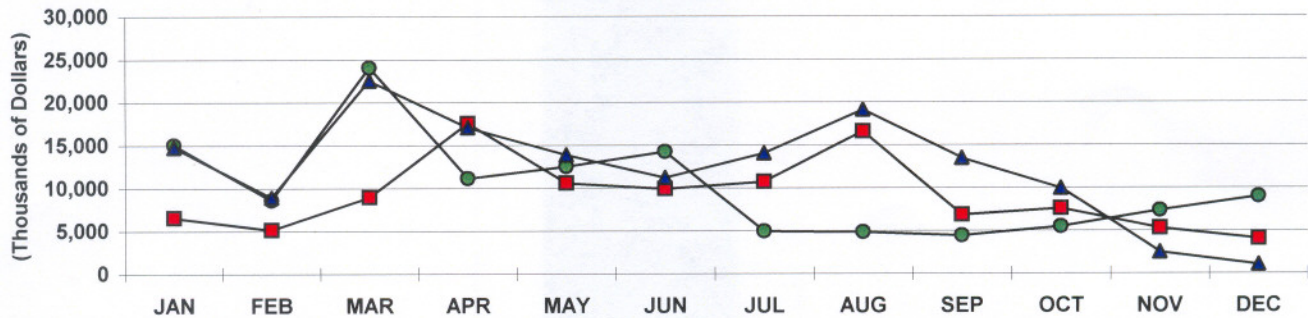
Notes:

Value of intended construction of new housekeeping residences as well as additions and alterations to existing residences. Construction relating to hotels and other structures intended for use as transient accommodations are not included. Compiled from Dept. of Planning and Natural Resources approved permits for which estimated value is available. [-] denotes data unavailable or not presented due to extreme fluctuations of percent changes. Data subject to revision.

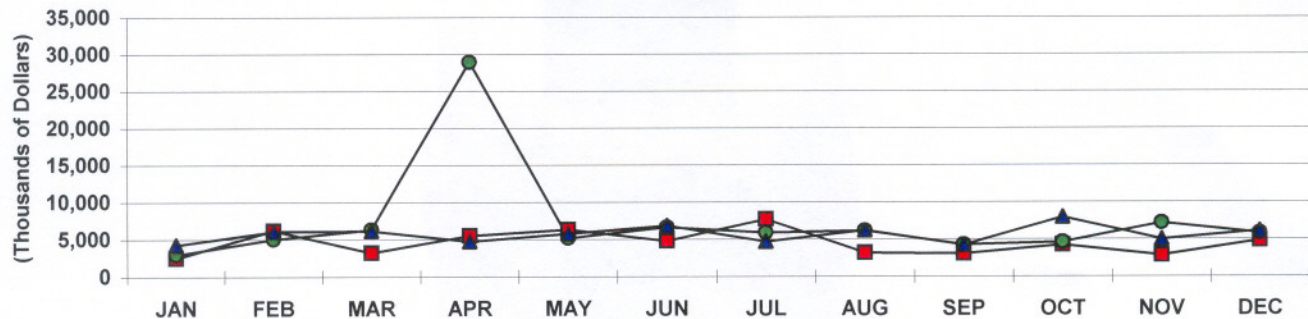
**U.S.V.I PRIVATE RES. PERMIT VALUE
2003, 2004 AND 2005 YTD**



**ST.THOMAS/JOHN PRIV. RES. PERMIT VALUE
2003, 2004 AND 2005 YTD**



**ST. CROIX PRIVATE RES. PERMIT VALUE
2003, 2004 AND 2005 YTD**



PRIVATE NON-RESIDENTIAL CONSTRUCTION PERMIT VALUE - U.S. Virgin Islands

Year To Date, Monthly, Quarterly and Annual Totals

In Thousands of Dollars, January 2004 to December 2005

Period	ST. THOMAS/ST. JOHN			ST. CROIX			U.S.V.I., TOTAL		
	2004	2005	Percent Change	2004	2005	Percent Change	2004	2005	Percent Change
YEAR TO DATE:									
DECEMBER	63,954	79,265	23.9	37,128	39,535	6.5	101,082	93,113	-7.9
MONTH:									
January	1,392	4,351	212.6	244	1,471	503.5	1,636	5,822	255.9
February	791	20,350	2474.3	360	48	-86.7	1,151	20,428	1675.6
March	1,210	964	-20.3	26,185	26,624	1.7	27,395	2,024	-92.6
April	1,980	583	-70.6	440	350	-20.5	2,420	1,756	-27.4
May	708	11,044	1460.0	12	84	596.0	720	11,128	1445.6
June	3,040	1,035	-66.0	985	300	-69.6	4,025	1,091	-72.9
July	3,696	1,659	-55.1	2,639	7,771	194.4	6,335	9,568	51.0
August	1,132	23,777	2000.9	2,656	180	-93.2	3,788	23,857	529.8
September	9,467	9,965	5.3	1,620	549	-66.1	11,087	10,687	-3.6
October	18,857	1,448	-92.3	112	906	709.1	18,969	2,441	-87.1
November	684	3,485	409.4	374	193	-48.6	1,058	3,564	236.7
December	20,998	603	-97.1	1,500	1,060	-29.3	22,498	748	-96.7
QUARTER:									
First	3,393	25,665	656.5	26,789	28,143	5.1	30,181	28,274	-6.3
Second	5,728	12,662	121.1	1,437	733	-49.0	7,165	13,975	95.0
Third	14,295	35,401	147.7	6,915	8,500	22.9	21,210	44,112	108.0
Fourth	40,539	5,536	-86.3	1,986	2,159	8.7	42,525	6,752	-84.1
ANNUAL TOTAL:	63,954	79,265	23.9	37,128	39,535	6.5	101,082	93,113	-7.9

Notes:

Value of intended private building construction exclusive of housekeeping residences. Includes hotels and other structures intended for use as transient accommodations. Compiled from Dept. of Planning and Natural Resources approved permits for which estimated value is available.

Construction relating to Hess Oil Virgin Islands is exempt from the permit process. [-] denotes data not presented due to extreme fluctuations of percent changes. Data subject to revision.

PUBLIC CONSTRUCTION PERMIT VALUE - U.S. Virgin Islands

Year To Date, Monthly, Quarterly and Annual Totals

In Thousands of Dollars, January 2004 to December 2005

Period	ST. THOMAS/ST. JOHN			ST. CROIX			U.S.V.I., TOTAL		
	2004	2005	Percent Change	2004	2005	Percent Change	2004	2005	Percent Change

YEAR TO DATE:

DECEMBER	24,624	37,114	50.7	3,070	33,963	-	27,694	71,077	156.6
----------	--------	--------	------	-------	--------	---	--------	--------	-------

MONTH:

January	0	26,805	-	0	65	-	0	26,870	-
February	0	528	-	700	8	-98.9	700	536	-23.5
March	20,390	0	-100.0	0	24,050	-	20,390	24,050	17.9
April	0	620	-	260	0	-100.0	260	620	138.5
May	0	1,000	-	1,600	0	-100.0	1,600	1,000	-37.5
June	0	3,978	-	0	0	-	0	3,978	-
July	14	3,515	25009.4	0	250	-	14	3,765	26795.1
August	700	669	-4.5	150	925	516.7	850	1,594	87.5
September	0	0	-	0	6,465	-	0	6,465	-
October	1,786	0	-100.0	300	0	-100.0	2,086	0	-100.0
November	100	0	-100.0	60	0	-100.0	160	0	-100.0
December	1,633	0	-100.0	0	2,200	-	1,633	2,200	34.7

QUARTER:

First	20,390	27,333	34.0	700	24,123	3346.1	21,090	51,456	144.0
Second	0	5,598	-	1,860	0	-100.0	1,860	5,598	200.9
Third	714	4,184	486.0	150	7,640	4993.3	864	11,824	1268.5
Fourth	3,520	0	-100.0	360	2,200	511.1	3,880	2,200	-43.3

ANNUAL TOTAL:	24,624	37,114	50.7	3,070	33,963	1006.3	27,694	71,077	156.6
---------------	--------	--------	------	-------	--------	--------	--------	--------	-------

Notes:

Value of intended Federal or Territory government building construction. Compiled from Dept. of Planning and Natural Resources approved permits for which estimated value is available. [-] denotes data unavailable or not present due to extreme fluctuations of percent changes.

Data subject to revision.