

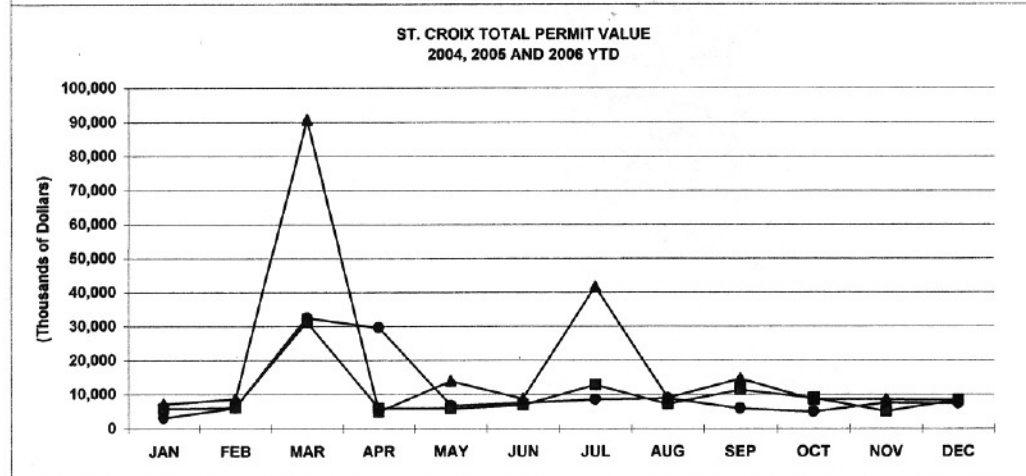
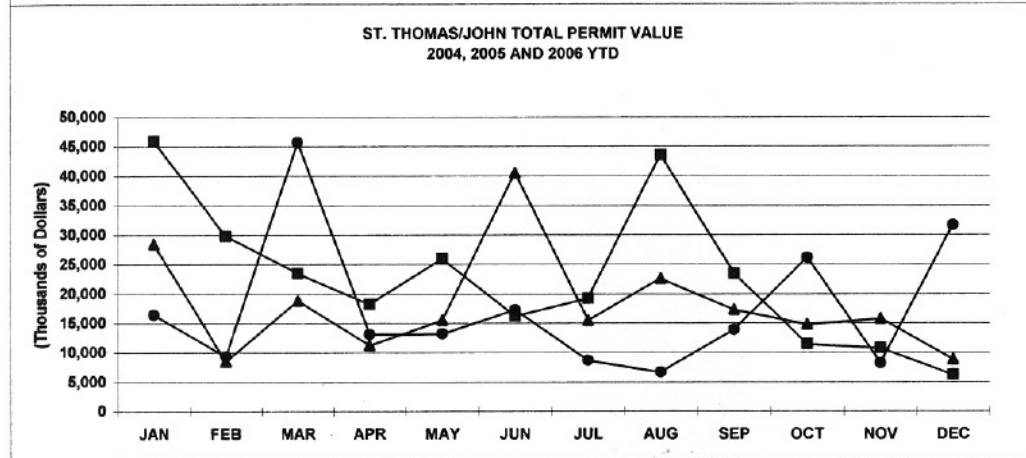
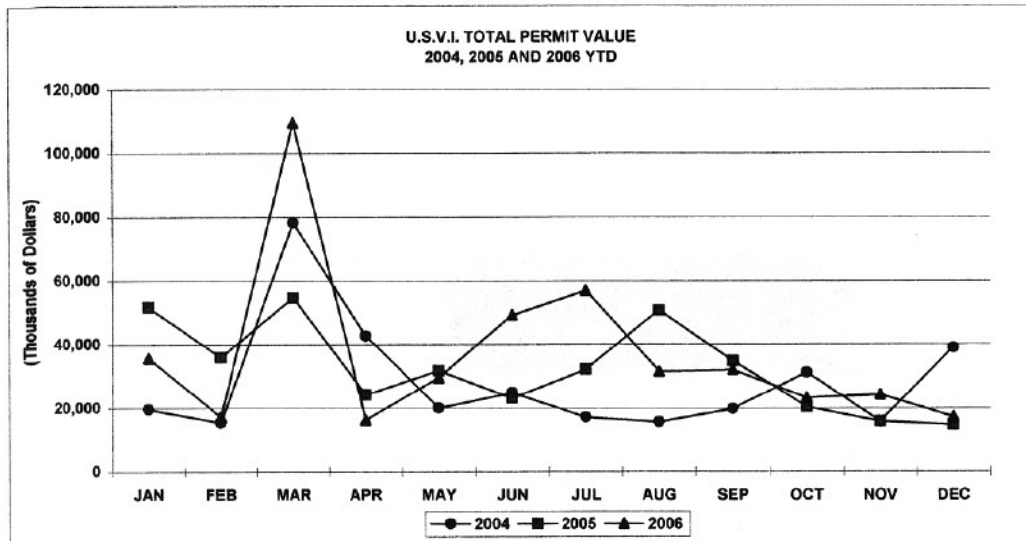
TOTAL CONSTRUCTION PERMIT VALUE - U.S. Virgin Islands  
Year To Date, Monthly, Quarterly and Annual Totals  
In Thousands of Dollars, January 2005 to December 2006

Period	ST. THOMAS/ST. JOHN			ST. CROIX			U.S.V.I., TOTAL		
	2005	2006	Percent Change	2005	2006	Percent Change	2005	2006	Percent Change
<b>YEAR TO DATE:</b>									
DECEMBER	274,267	217,658	-20.6	115,910	225,046	94.2	390,177	442,704	13.5
<b>MONTH:</b>									
January	45,911	28,446	-38.0	5,816	7,267	24.9	51,727	35,713	-31.0
February	29,786	8,524	-71.4	6,158	8,750	42.1	35,945	17,274	-51.9
March	23,509	18,771	-20.2	31,268	90,690	190.0	54,776	109,461	99.8
April	18,265	11,258	-38.4	5,905	4,957	-16.0	24,170	16,215	-32.9
May	25,926	15,500	-40.2	5,867	13,971	138.1	31,793	29,470	-7.3
June	16,223	40,504	149.7	6,925	8,751	26.4	23,148	49,254	112.8
July	19,227	15,423	-19.8	12,847	41,599	223.8	32,074	57,023	77.8
August	43,567	22,566	-48.2	7,197	8,978	24.8	50,763	31,544	-37.9
September	23,439	17,279	-26.3	11,393	14,679	28.8	34,832	31,958	-8.3
October	11,410	14,776	29.5	8,983	8,508	-5.3	20,394	23,284	14.2
November	10,758	15,760	46.5	5,091	8,505	67.1	15,849	24,265	53.1
December	6,245	8,850	41.7	8,462	8,392	-0.8	14,707	17,242	17.2
<b>QUARTER:</b>									
First	99,206	55,741	-43.8	43,242	106,707	146.8	142,448	162,449	14.0
Second	60,415	67,262	11.3	18,696	27,678	48.0	79,111	94,940	20.0
Third	86,233	55,268	-35.9	31,437	65,256	107.6	117,670	120,525	2.4
Fourth	28,414	39,387	38.6	22,536	25,404	12.7	50,949	64,791	27.2
<b>ANNUAL TOTAL:</b>	<b>274,267</b>	<b>217,658</b>	<b>-20.6</b>	<b>115,910</b>	<b>225,046</b>	<b>94.2</b>	<b>390,177</b>	<b>442,704</b>	<b>13.5</b>

Notes:

Value of all types of intended building construction. Compiled from Dept. of Planning and Natural Resources approved permits for which estimated value is available. Construction relating to Hess Oil Virgin Islands is exempt from the permit process. [-] denotes data unavailable or not presented due to extreme fluctuations of percent changes. Data subject to revision.

::



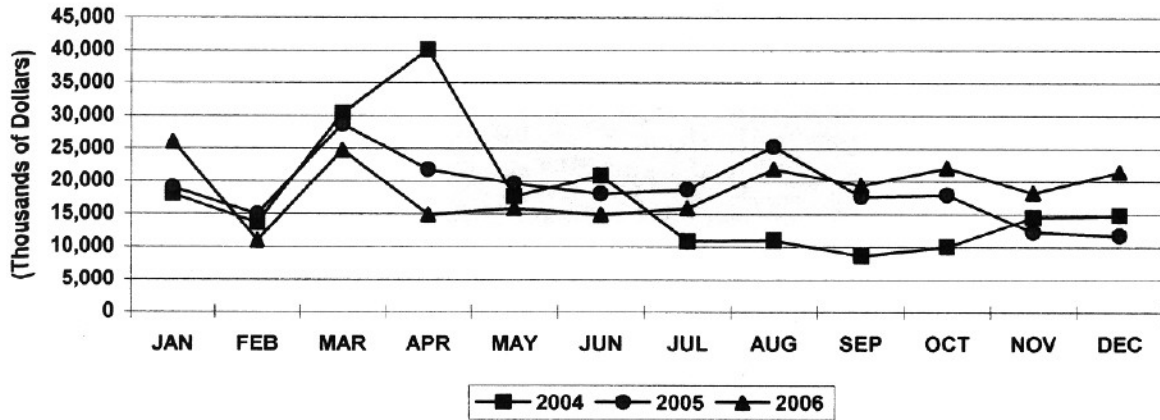
PRIVATE RESIDENTIAL CONSTRUCTION PERMITS VALUE - U.S. Virgin Islands  
 Year To Date, Monthly, Quarterly and Annual Totals  
 In Thousands of Dollars, January 2005 to December 2006

Period	ST. THOMAS/ST. JOHN			ST. CROIX			U.S.V.I., TOTAL		
	2005	2006	Percent Change	2005	2006	Percent Change	2005	2006	Percent Change
<b>YEAR TO DATE:</b>									
DECEMBER	157,888	143,551	-9.1	68,100	86,128	26.5	225,987	226,431	0.2
<b>MONTH:</b>									
January	14,755	21,482	45.6	4,280	4,535	6.0	19,034	26,017	36.7
February	8,908	4,684	-47.4	6,073	6,212	2.3	14,981	10,896	-27.3
March	22,545	17,375	-22.9	6,158	7,383	19.9	28,702	24,758	-13.7
April	17,062	10,221	-40.1	4,732	4,709	-0.5	21,794	14,930	-31.5
May	13,882	11,191	-19.4	5,783	4,699	-18.8	19,665	15,890	-19.2
June	11,211	13,561	21.0	6,869	8,352	21.6	18,080	14,930	-17.4
July	14,052	12,543	-10.7	4,688	6,837	45.8	18,740	15,890	-15.2
August	19,122	13,558	-29.1	6,192	8,528	37.7	25,313	21,913	-13.4
September	13,474	6,109	-54.7	4,206	12,152	188.9	17,680	19,380	9.6
October	9,962	13,054	31.0	7,991	8,428	5.5	17,953	22,086	23.0
November	7,273	11,905	63.7	5,012	5,902	17.8	12,285	18,261	48.6
December	5,642	7,869	39.5	6,117	8,392	37.2	11,759	21,482	82.7
<b>QUARTER:</b>									
First	46,208	43,540	-5.8	16,510	18,130	9.8	62,718	61,670	-1.7
Second	42,155	34,972	-17.0	17,384	17,760	2.2	59,539	45,749	-23.2
Third	46,648	32,210	-31.0	15,086	27,517	82.4	61,734	57,182	-7.4
Fourth	22,877	32,828	43.5	19,120	22,721	18.8	41,997	61,830	47.2
<b>ANNUAL TOTAL:</b>	<b>157,888</b>	<b>143,551</b>	<b>-9.1</b>	<b>68,100</b>	<b>86,128</b>	<b>26.5</b>	<b>225,987</b>	<b>226,431</b>	<b>0.2</b>

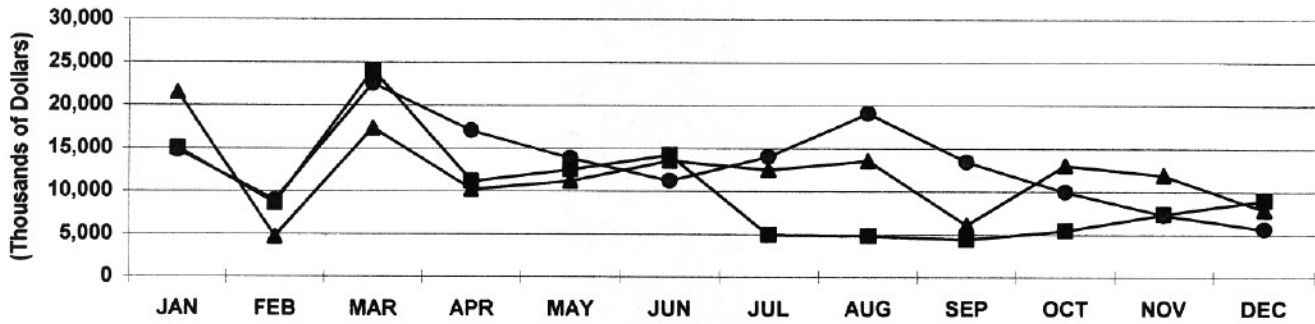
Notes:

Value of intended construction of new housekeeping residences as well as additions and alterations to existing residences. Construction relating to hotels and other structures intended for use as transient accommodations are not included. Compiled from Dept. of Planning and Natural Resources approved permits for which estimated value is available. [-] denotes data unavailable or not presented due to extreme fluctuations of percent changes. Data subject to revision.

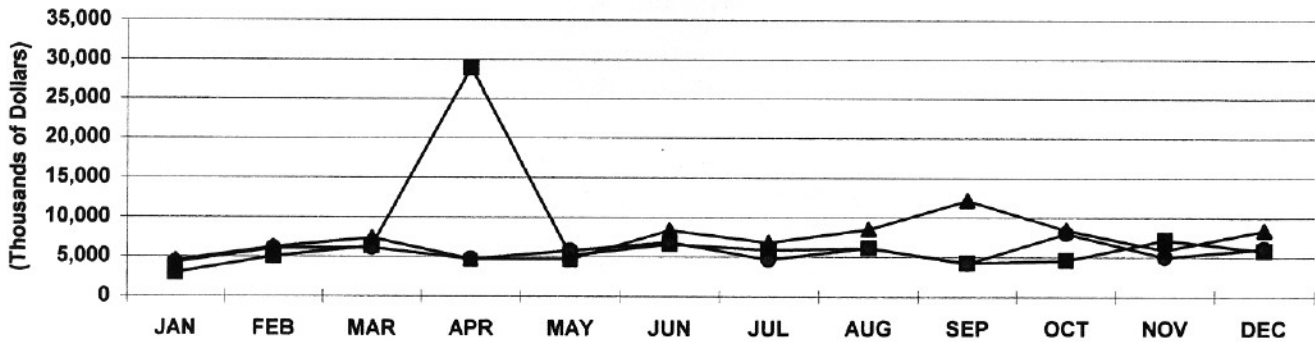
**U.S.V.I PRIVATE RES. PERMIT VALUE**  
2004, 2005 AND 2006 YTD



**ST. THOMAS/JOHN PRIV. RES. PERMIT VALUE**  
2004, 2005 AND 2006 YTD



**ST. CROIX PRIVATE RES. PERMIT VALUE**  
2004, 2005 AND 2006 YTD



PRIVATE NON-RESIDENTIAL CONSTRUCTION PERMIT VALUE - U.S. Virgin Islands  
 Year To Date, Monthly, Quarterly and Annual Totals  
 In Thousands of Dollars, January 2005 to December 2006

Period	ST. THOMAS/ST. JOHN			ST. CROIX			U.S.V.I., TOTAL		
	2005	2006	Percent Change	2005	2006	Percent Change	2005	2006	Percent Change
<b>YEAR TO DATE:</b>									
DECEMBER	79,265	64,798	-18.3	39,535	121,557	207.5	93,113	186,355	100.1
<b>MONTH:</b>									
January	4,351	6,964	60.1	1,471	2,692	83.0	5,822	9,656	65.8
February	20,350	3,065	-84.9	48	1,538	-	20,428	4,603	-77.5
March	964	1,396	44.9	26,624	68,307	156.6	2,024	69,703	-
April	583	1,024	75.6	350	248	-29.1	1,756	1,272	-27.6
May	11,044	2,409	-78.2	84	9,019	-	11,128	11,428	2.7
June	1,035	23,993	-	300	399	33.0	1,091	24,392	-
July	1,659	1,281	-22.8	7,771	34,763	347.3	9,568	36,043	-
August	23,777	9,008	-62.1	180	450	150.0	23,857	9,458	-60.4
September	9,965	9,520	-4.5	549	1,722	213.7	10,687	11,242	5.2
October	1,448	1,422	-1.8	906	80	-91.2	2,441	1,502	-38.5
November	3,485	3,856	10.6	193	2,339	1115.2	3,564	6,195	73.8
December	603	861	42.8	1,060	0	-100.0	748	861	15.1
<b>QUARTER:</b>									
First	25,665	11,425	-55.5	28,143	72,537	157.7	28,274	83,962	197.0
Second	12,662	27,426	116.6	733	9,666	-	13,975	37,091	165.4
Third	35,401	19,808	-44.0	8,500	36,935	334.5	44,112	56,743	28.6
Fourth	5,536	6,139	10.9	2,159	2,419	12.1	6,752	8,558	26.7
<b>ANNUAL TOTAL:</b>	<b>79,265</b>	<b>64,798</b>	<b>-18.3</b>	<b>39,535</b>	<b>121,557</b>	<b>207.5</b>	<b>93,113</b>	<b>186,355</b>	<b>100.1</b>

Notes:

Value of intended private building construction exclusive of housekeeping residences. Includes hotels and other structures intended for use as transient accommodations. Compiled from Dept. of Planning and Natural Resources approved permits for which estimated value is available. Construction relating to Hess Oil Virgin Islands is exempt from the permit process. [-] denotes data not presented due to extreme fluctuations of percent changes. Data subject to revision.

PUBLIC CONSTRUCTION PERMIT VALUE - U.S. Virgin Islands  
 Year To Date, Monthly, Quarterly and Annual Totals  
 In Thousands of Dollars, January 2005 to December 2006

Period	ST. THOMAS/ST. JOHN			ST. CROIX			U.S.V.I., TOTAL		
	2005	2006	Percent Change	2005	2006	Percent Change	2005	2006	Percent Change
<b>YEAR TO DATE:</b>									
DECEMBER	37,114	9,309	-74.9	33,963	17,361	-	71,077	26,670	-62.5
<b>MONTH:</b>									
January	26,805	0	-	65	40	-38.5	26,870	40	-99.9
February	528	776	-	8	1,000	-	536	1,776	231.6
March	0	0	-	24,050	15,000	-37.6	24,050	15,000	-37.6
April	620	13	-97.8	0	0	-	620	13	-97.8
May	1,000	1,900	90.0	0	253	-	1,000	2,153	115.3
June	3,978	2,950	-25.8	0	0	-	3,978	2,950	-25.8
July	3,515	1,600	-54.5	250	0	-	3,765	1,600	-57.5
August	669	0	-	925	0	-	1,594	0	-
September	0	1,650	-	6,465	804	-87.6	6,465	2,454	-62.0
October	0	300	-	0	0	-	0	300	-
November	0	0	-	0	264	-	0	264	-
December	0	120	-	2,200	0	-	2,200	120	-94.5
<b>QUARTER:</b>									
First	27,333	776	-97.2	24,123	16,040	-33.5	51,456	16,816	-67.3
Second	5,598	4,863	-13.1	0	253	-	5,598	5,116	-8.6
Third	4,184	3,250	-22.3	7,640	804	-89.5	11,824	4,054	-65.7
Fourth	0	420	-	2,200	264	-88.0	2,200	684	-68.9
<b>ANNUAL TOTAL:</b>	<b>37,114</b>	<b>9,309</b>	<b>-74.9</b>	<b>33,963</b>	<b>17,361</b>	<b>-48.9</b>	<b>71,077</b>	<b>26,670</b>	<b>-62.5</b>

Notes:

Value of intended Federal or Territory government building construction. Compiled from Dept. of Planning and Natural Resources approved permits for which estimated value is available. [-] denotes data unavailable or not present due to extreme fluctuations of percent changes.

Data subject to revision.

::