

HOTEL OCCUPANCY RATES - U.S. Virgin Islands
Year To Date, Monthly, Quarterly and Annual Totals
January 2003 to December 2004

Period	ST. THOMAS/ST. JOHN			ST. CROIX			U.S.V.I., TOTAL		
	Percent 2003	Percent 2004	Pct. Pt. Change	Percent 2003	Percent 2004	Pct. Pt. Change	Percent 2003	Percent 2004	Pct. Pt. Change

YEAR TO DATE:

DECEMBER	62.2	65.8	3.6	40.6	49.2	8.5	57.1	61.8	4.7
----------	------	------	-----	------	------	-----	------	------	-----

MONTH:

January	68.6	63.9	-4.7	43.3	46.4	3.1	62.7	59.7	-3.0
February	74.8	73.6	-1.2	53.2	61.8	8.6	69.8	70.8	1.0
March	73.2	71.8	-1.4	47.4	54.1	6.7	67.2	67.6	0.4
April	70.2	75.3	5.1	46.9	56.9	10.0	64.8	71.0	6.2
May	66.2	69.6	3.4	42.1	48.1	6.0	60.6	64.5	3.9
June	62.3	67.1	4.8	40.3	45.9	5.6	57.2	62.1	4.9
July	67.3	67.2	-0.1	36.0	49.2	13.2	60.0	62.8	2.8
August	58.8	63.0	4.2	33.7	44.5	10.8	52.9	58.5	5.6
September	31.6	41.5	9.9	22.9	30.6	7.7	29.5	38.8	9.3
October	45.7	56.6	10.9	34.7	38.1	3.4	43.1	52.2	9.1
November	62.5	71.8	9.3	41.6	54.9	13.3	57.5	67.7	10.2
December	64.7	67.9	3.2	45.6	59.5	13.9	60.1	65.7	5.6

QUARTER:

First	72.2	69.8	-2.4	48.0	54.1	6.1	66.6	66.0	-0.5
Second	66.2	70.7	4.4	43.1	50.3	7.2	60.9	65.9	5.0
Third	52.6	57.2	4.7	30.9	41.4	10.6	47.5	53.4	5.9
Fourth	57.6	65.4	7.8	40.6	50.8	10.2	53.6	61.9	8.3

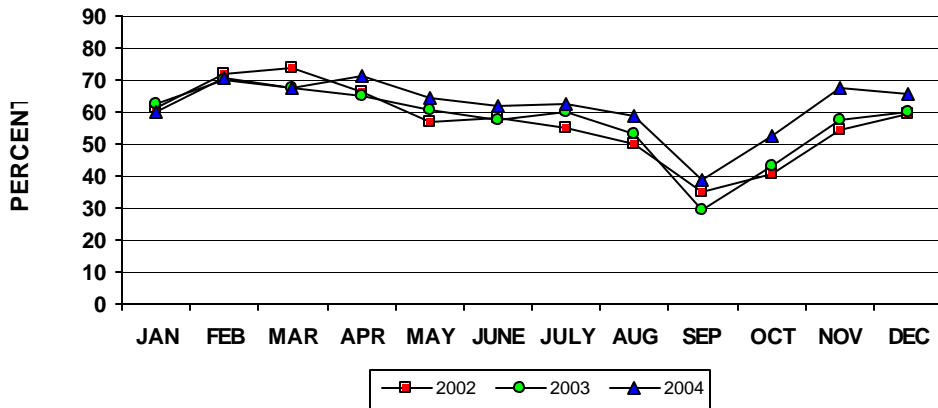
ANNUAL TOTAL:	62.2	65.8	3.6	40.6	49.1	8.5	57.1	61.8	4.7
---------------	------	------	-----	------	------	-----	------	------	-----

Notes:

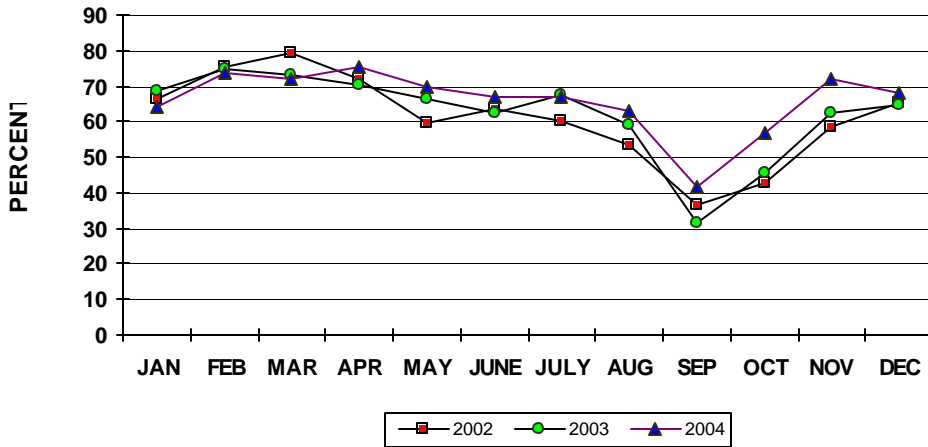
Occupancy Rate equals reported number of room nights occupied as a percentage of reported room nights available. Percentage point change equals the absolute difference between current month and same month one year prior. Data subject to revision.

::

USVI OCCUPANCY RATES
2002, 2003 AND 2004 YTD



ST. THOMAS/ST. JOHN OCCUPANCY RATE
2002, 2003 AND 2004 YTD



ST. CROIX OCCUPANCY RATE
2002, 2003 AND 2004 YTD

