

HOTEL OCCUPANCY RATES - U.S. Virgin Islands  
Year To Date, Monthly, Quarterly and Annual Totals  
January 2005 to December 2006

Period	ST. THOMAS/ST. JOHN			ST. CROIX			U.S.V.I., TOTAL		
	Percent 2005	Percent 2006	Pct. Pt. Change	Percent 2005	Percent 2006	Pct. Pt. Change	Percent 2005	Percent 2006	Pct. Pt. Change

YEAR TO DATE:

DECEMBER            66.8    63.7    -3.1    56.7    51.2    -5.5    64.3    60.6    -3.7

MONTH:

January            73.8    66.7    -7.2    75.4    55.5    -19.8    74.2    64.0    -10.2  
February            82.8    78.7    -4.1    79.1    68.9    -10.2    81.9    76.4    -5.6  
March                78.2    78.9    0.6    66.3    66.1    -0.2    75.4    75.8    0.5  
April                 72.2    77.6    5.5    57.4    55.9    -1.5    68.7    72.5    3.8  
May                  64.3    68.5    4.2    50.0    51.9    1.9    60.9    64.5    3.6  
June                 72.5    67.3    -5.1    51.7    53.3    1.6    67.4    63.9    -3.5  
July                  73.0    64.6    -8.4    59.7    47.8    -11.8    69.7    60.4    -9.3  
August               59.6    52.7    -6.9    49.7    47.2    -2.5    57.1    51.3    -5.8  
September           39.5    35.0    -4.5    38.5    36.4    -2.1    39.2    35.3    -3.9  
October              53.2    48.3    -4.9    44.0    39.3    -4.7    50.8    46.0    -4.8  
November            64.4    57.6    -6.8    53.8    47.7    -6.1    61.7    55.1    -6.7  
December            65.9    66.0    0.1    55.5    46.8    -8.7    63.2    61.0    -2.2

QUARTER:

First                78.2    74.6    -3.5    73.4    63.3    -10.1    77.0    71.9    -5.1  
Second               69.6    71.1    1.6    53.0    53.7    0.6    65.6    66.9    1.3  
Third                57.6    51.1    -6.6    49.4    43.9    -5.5    55.6    49.3    -6.3  
Fourth               61.1    57.1    -4.0    51.1    44.6    -6.5    58.6    53.9    -4.7

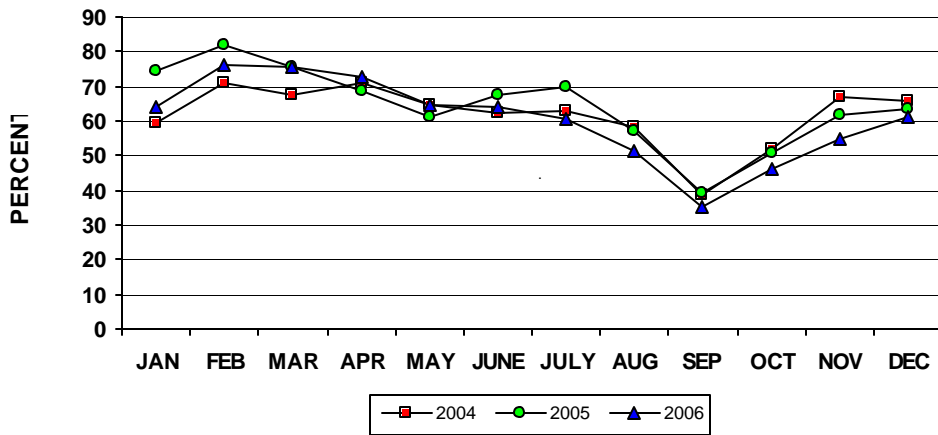
ANNUAL TOTAL:    66.8    63.7    -3.1    56.7    51.2    -5.5    64.3    60.6    -3.7

Notes:

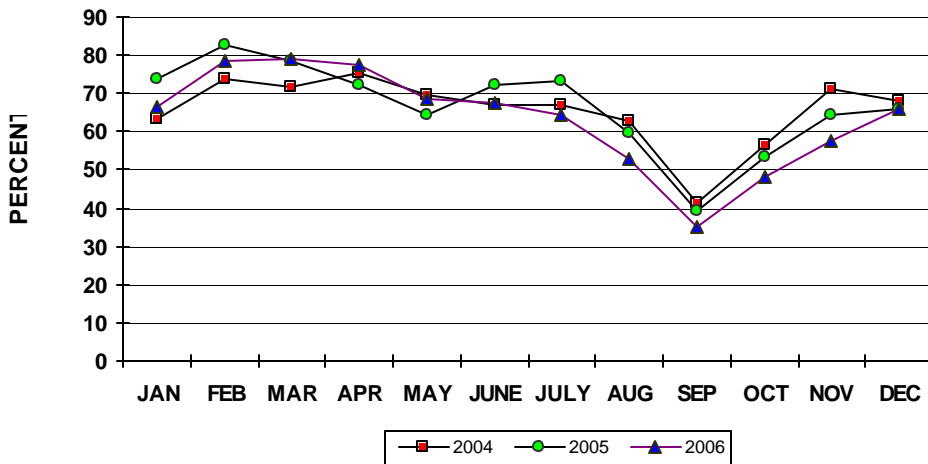
Occupancy Rate equals reported number of room nights occupied as a percentage of reported room nights available. Percentage point change equals the absolute difference between current month and same month one year prior. Data subject to revision.

::

USVI OCCUPANCY RATES  
2004, 2005 AND 2006 YTD



ST. THOMAS/ST. JOHN OCCUPANCY RATE  
2004, 2005 AND 2006 YTD



ST. CROIX OCCUPANCY RATE  
2004, 2005 AND 2006 YTD

