

HOTEL OCCUPANCY RATES-U.S. Virgin Islands  
Year To Date, Monthly, Quarterly and Annual Totals  
January 2014 to December 2015

Period	ST. THOMAS/ST. JOHN			ST. CROIX			U.S.V.I., TOTAL		
	Percent 2014	Percent 2015	Pct. Pt. Change	Percent 2014	Percent 2015	Pct. Pt. Change	Percent 2014	Percent 2015	Pct. Pt. Change

YEAR TO DATE:

DECEMBER            58.6    61.0    2.4    39.2    44.5    5.3    53.9    57.1    3.2

MONTH:

January            66.6    69.0    2.4    42.8    51.3    8.6    60.9    64.7    3.8  
February           68.7    70.1    1.3    53.0    60.0    7.0    65.1    67.8    2.7  
March              68.0    69.8    1.8    49.9    59.5    9.5    63.6    67.5    3.8  
April               62.6    68.2    5.6    39.6    46.9    7.4    56.9    63.2    6.2  
May                 59.5    64.5    5.0    33.9    40.4    6.4    53.2    58.9    5.7  
June                60.7    62.9    2.3    36.0    46.7    10.7    54.8    58.9    4.1  
July                 63.4    63.7    0.3    40.0    52.2    12.1    57.7    60.9    3.3  
August             55.1    56.5    1.4    31.5    35.2    3.7    49.3    51.3    2.0  
September        36.7    41.1    4.3    25.7    28.5    2.8    34.1    37.9    3.8  
October            43.1    46.2    3.1    31.1    31.1    0.0    40.3    42.6    2.3  
November         55.9    57.9    1.9    39.6    39.2    -0.4    52.1    53.4    1.4  
December         62.7    63.7    1.0    48.5    47.6    -0.9    59.4    60.0    0.6

QUARTER:

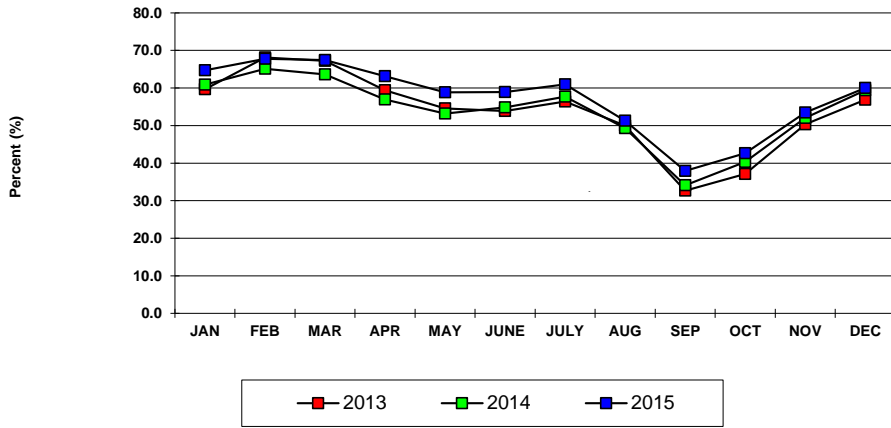
First               67.8    69.6    1.9    48.4    56.7    8.3    63.2    66.6    3.4  
Second            60.9    65.2    4.3    36.5    44.7    8.2    55.0    60.3    5.3  
Third              51.8    53.8    2.0    32.5    38.4    5.9    47.1    50.1    3.0  
Fourth             53.8    55.8    2.0    39.7    39.1    -0.6    50.5    51.9    1.4

ANNUAL TOTAL:    58.6    61.0    2.4    39.2    44.5    5.3    53.9    57.1    3.2

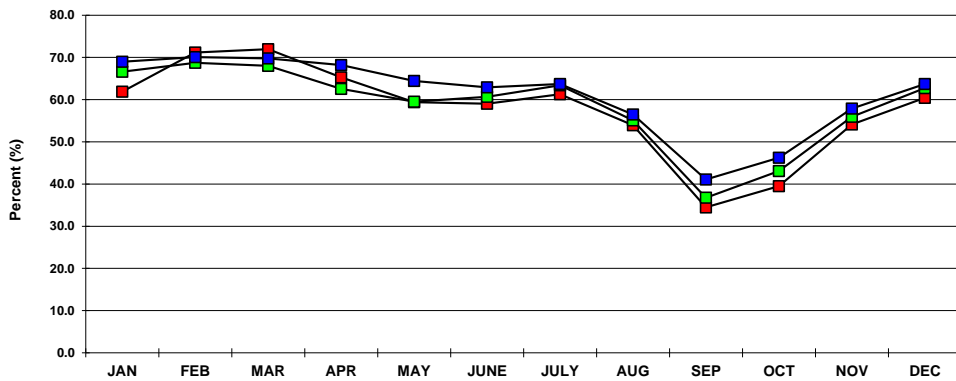
Notes:

Occupancy Rate equals reported number of room nights occupied as a percentage of reported room nights available. Percentage point change equals the absolute difference between current month and same month one year prior. Data subject to revision.

**U.S.V.I. OCCUPANCY RATES  
2013, 2014 AND 2015 YTD**



**ST. THOMAS/ST. JOHN OCCUPANCY  
2013, 2014 AND 2015 YTD**



**ST. CROIX OCCUPANCY RATES  
2013, 2014 AND 2015 YTD**

