

HOTEL OCCUPANCY RATES-U.S. Virgin Islands  
Year To Date, Monthly, Quarterly and Annual Totals  
January 2015 to December 2016

Period	ST. THOMAS/ST. JOHN			ST. CROIX			U.S.V.I., TOTAL		
	Percent 2015	Percent 2016	Pct. Pt. Change	Percent 2015	Percent 2016	Pct. Pt. Change	Percent 2015	Percent 2016	Pct. Pt. Change

YEAR TO DATE:

DECEMBER            61.0    59.9    -1.1    44.5    46.6    2.0    57.1    56.7    -0.4

MONTH:

January            69.0    69.8    0.8    51.3    54.2    2.9    64.7    66.2    1.5  
February           70.1    69.9    -0.2    60.0    68.2    8.2    67.8    69.5    1.7  
March               69.8    69.0    -0.7    59.5    61.5    2.0    67.5    67.3    -0.1  
April                68.2    63.0    -5.2    46.9    42.8    -4.1    63.2    57.9    -5.2  
May                 64.5    59.0    -5.5    40.4    46.4    6.0    58.9    56.2    -2.7  
June                62.9    64.0    1.1    46.7    47.1    0.5    58.9    60.1    1.1  
July                 63.7    63.5    -0.2    52.2    45.9    -6.3    60.9    59.1    -1.8  
August             56.5    57.8    1.4    35.2    42.7    7.4    51.3    54.3    3.0  
September        41.1    41.2    0.1    28.5    33.2    4.7    37.9    39.2    1.3  
October            46.2    43.5    -2.7    31.1    30.0    -1.1    42.6    40.1    -2.5  
November         57.9    54.8    -3.0    39.2    39.2    0.1    53.4    51.0    -2.4  
December         63.7    64.2    0.4    47.6    53.6    5.9    60.0    61.7    1.7

QUARTER:

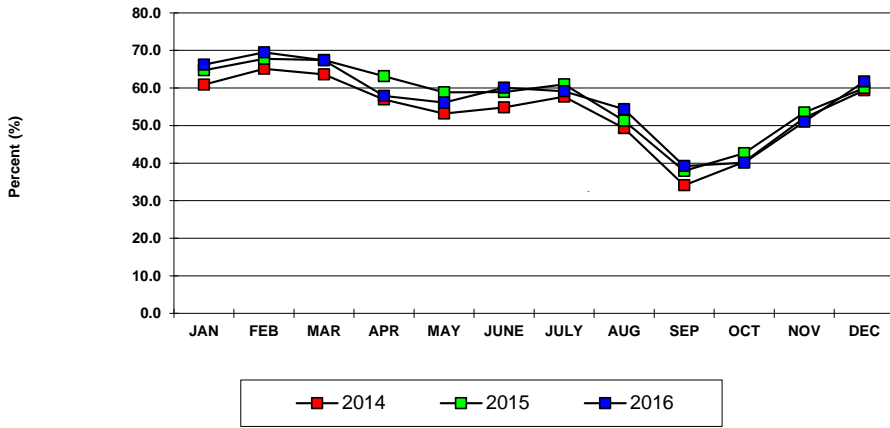
First                69.6    69.6    0.0    56.7    61.1    4.4    66.6    67.6    1.0  
Second             65.2    61.9    -3.2    44.7    45.3    0.7    60.3    58.0    -2.3  
Third                53.8    54.3    0.5    38.4    40.6    2.1    50.1    51.0    0.9  
Fourth              55.8    54.0    -1.9    39.1    40.4    1.3    51.9    50.7    -1.2

ANNUAL TOTAL:    61.0    59.9    -1.1    44.5    46.6    2.0    57.1    56.7    -0.4

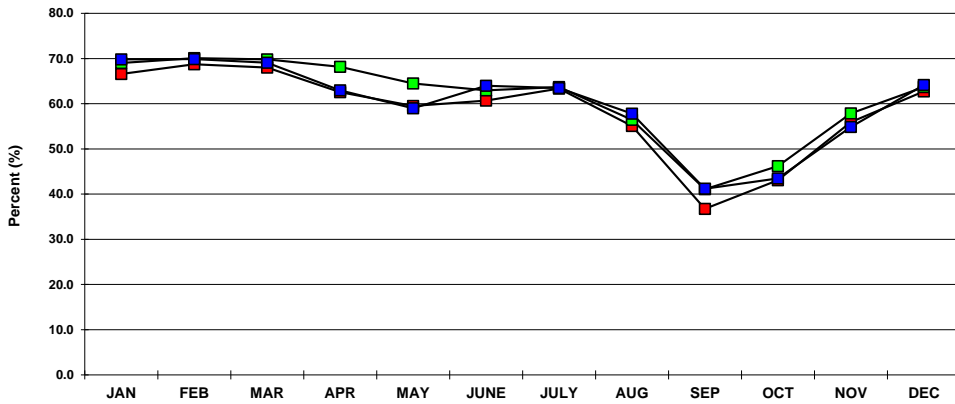
Notes:

Occupancy Rate equals reported number of room nights occupied as a percentage of reported room nights available. Percentage point change equals the absolute difference between current month and same month one year prior. Data subject to revision. **Please note this report is missing data related to several accomodation establishments. The report will be revised in the near future.**

**U.S.V.I. OCCUPANCY RATES  
2014, 2015 AND 2016 YTD**



**ST. THOMAS/ST. JOHN OCCUPANCY  
2014, 2015 AND 2016 YTD**



**ST. CROIX OCCUPANCY RATES  
2014, 2015 AND 2016 YTD**

