

HOTEL OCCUPANCY RATES-U.S. Virgin Islands
Year To Date, Monthly, Quarterly and Annual Totals
January 2016 to December 2017

Period	ST. THOMAS/ST. JOHN			ST. CROIX			U.S.V.I., TOTAL		
	Percent 2016	Percent 2017	Pct. Pt. Change	Percent 2016	Percent 2017	Pct. Pt. Change	Percent 2016	Percent 2017	Pct. Pt. Change

YEAR TO DATE:

DECEMBER 59.9 51.2 -8.7 46.6 51.5 4.9 56.7 51.3 -5.4

MONTH:

January 69.8 69.8 0.0 54.2 59.5 5.3 66.2 67.4 1.2
February 69.9 72.5 2.6 68.2 67.3 -0.9 69.5 71.3 1.8
March 69.0 79.9 10.9 61.5 69.6 8.2 67.3 77.5 10.2
April 63.0 72.3 9.4 42.8 55.0 12.2 57.9 68.3 10.4
May 59.0 62.5 3.5 46.4 50.3 4.0 56.2 59.7 3.5
June 64.0 63.1 -0.9 47.1 50.7 3.5 60.1 60.2 0.1
July 63.5 59.9 -3.6 45.9 51.6 5.8 59.1 58.0 -1.2
August 57.8 19.8 -38.0 42.7 33.8 -8.8 54.3 23.0 -31.3
September 41.2 4.0 -37.2 33.2 25.6 -7.6 39.2 9.1 -30.1
October 43.5 4.9 -38.6 30.0 34.5 4.6 40.1 11.5 -28.6
November 54.8 6.8 -48.0 39.2 43.8 4.6 51.0 15.1 -35.9
December 64.2 8.0 -56.2 53.6 44.8 -8.8 61.7 16.8 -44.9

QUARTER:

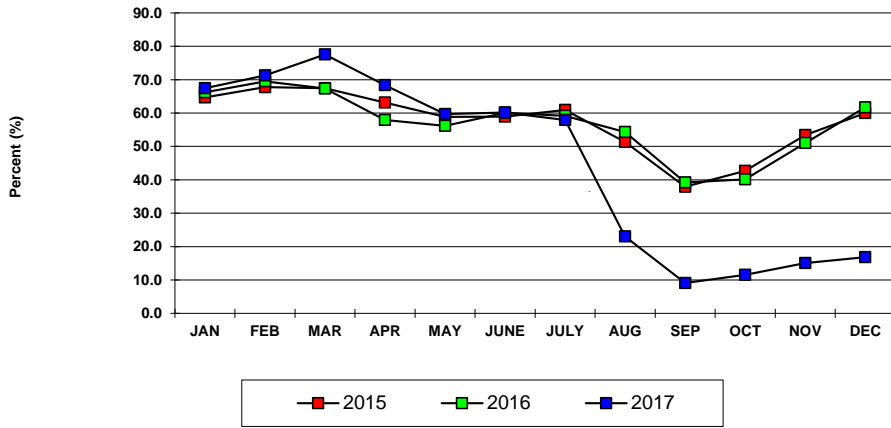
First 69.6 74.0 4.4 61.1 65.3 4.2 67.6 72.0 4.3
Second 61.9 61.9 0.0 45.3 51.9 6.6 58.0 62.6 4.6
Third 54.3 27.5 -26.8 40.6 36.7 -3.9 51.0 29.6 -21.4
Fourth 54.0 6.5 -47.5 40.4 41.0 0.7 50.7 14.4 -36.2

ANNUAL TOTAL: 59.9 42.7 -17.2 46.6 48.4 1.9 56.7 44.1 -12.7

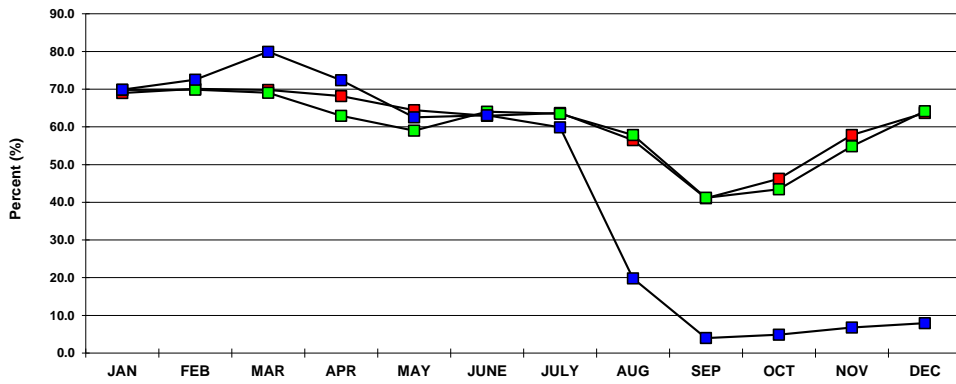
Notes:

Occupancy Rate equals reported number of room nights occupied as a percentage of reported room nights available. Percentage point change equals the absolute difference between current month and same month one year prior. Data subject to revision.

**U.S.V.I. OCCUPANCY RATES
2015, 2016 AND 2017 YTD**



**ST. THOMAS/ST. JOHN OCCUPANCY
2015, 2016 AND 2017 YTD**



**ST. CROIX OCCUPANCY RATES
2015, 2016 AND 2017 YTD**

