

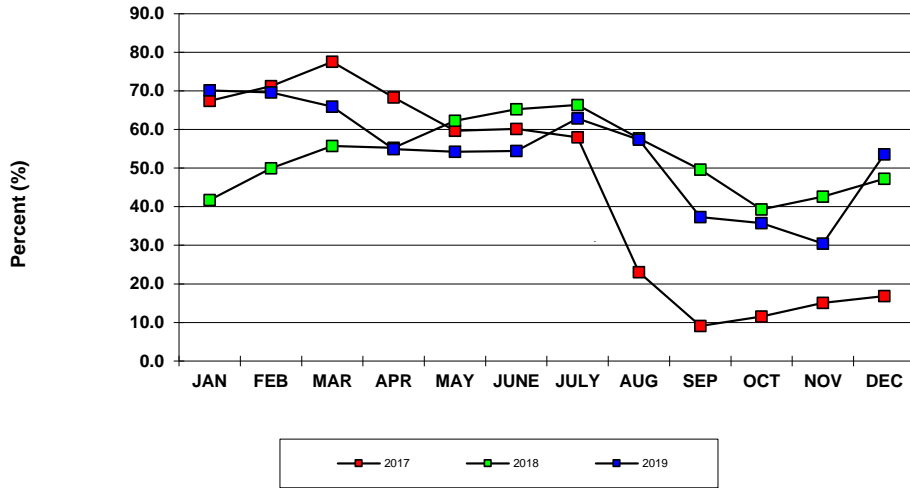
HOTEL OCCUPANCY RATES-U.S. Virgin Islands  
Year To Date, Monthly, Quarterly and Annual Totals  
January 2018 to December 2019

| Period               | ST. THOMAS/ST. JOHN |                 |                    | ST. CROIX       |                 |                    | U.S.V.I., TOTAL |                 |                    |
|----------------------|---------------------|-----------------|--------------------|-----------------|-----------------|--------------------|-----------------|-----------------|--------------------|
|                      | Percent<br>2018     | Percent<br>2019 | Pct. Pt.<br>Change | Percent<br>2018 | Percent<br>2019 | Pct. Pt.<br>Change | Percent<br>2018 | Percent<br>2019 | Pct. Pt.<br>Change |
| <b>YEAR TO DATE:</b> |                     |                 |                    |                 |                 |                    |                 |                 |                    |
| DECEMBER             | 47.6                | 51.0            | 3.5                | 57.6            | 51.7            | -5.9               | 51.4            | 51.3            | -0.1               |
| <b>MONTH:</b>        |                     |                 |                    |                 |                 |                    |                 |                 |                    |
| January              | 33.8                | 77.5            | 43.6               | 54.7            | 58.8            | 4.1                | 41.7            | 70.1            | 28.4               |
| February             | 41.8                | 74.0            | 32.1               | 62.0            | 62.7            | 0.6                | 50.0            | 69.6            | 19.7               |
| March                | 52.6                | 69.0            | 16.5               | 59.5            | 61.3            | 1.8                | 55.7            | 65.9            | 10.2               |
| April                | 55.9                | 57.3            | 1.4                | 54.5            | 50.8            | -3.7               | 55.2            | 54.9            | -0.3               |
| May                  | 61.8                | 57.1            | -4.8               | 62.8            | 49.5            | -13.3              | 62.3            | 54.3            | -8.0               |
| June                 | 65.3                | 59.3            | -6.0               | 65.2            | 46.3            | -19.0              | 65.3            | 54.5            | -10.8              |
| July                 | 72.7                | 73.5            | 0.9                | 57.4            | 50.0            | -7.5               | 66.4            | 62.9            | -3.5               |
| August               | 55.6                | 60.5            | 4.9                | 61.6            | 53.0            | -8.6               | 57.7            | 57.4            | -0.3               |
| September            | 47.9                | 32.3            | -15.6              | 53.0            | 47.7            | -5.3               | 49.6            | 37.3            | -12.3              |
| October              | 31.7                | 31.3            | -0.4               | 54.4            | 46.1            | -8.4               | 39.3            | 35.7            | -3.6               |
| November             | 36.7                | 26.5            | -10.2              | 54.8            | 42.3            | -12.5              | 42.6            | 30.5            | -12.2              |
| December             | 43.4                | 52.9            | 9.5                | 54.1            | 54.8            | 0.6                | 47.2            | 53.5            | 6.3                |
| <b>QUARTER:</b>      |                     |                 |                    |                 |                 |                    |                 |                 |                    |
| First                | 41.8                | 73.6            | 31.8               | 58.6            | 60.9            | 2.2                | 48.7            | 68.6            | 19.9               |
| Second               | 61.1                | 57.9            | -3.2               | 60.4            | 48.9            | -11.5              | 60.8            | 54.6            | -6.2               |
| Third                | 57.8                | 51.0            | -6.8               | 57.4            | 50.2            | -7.2               | 57.6            | 50.7            | -7.0               |
| Fourth               | 36.8                | 34.0            | -2.8               | 54.4            | 47.3            | -7.2               | 42.8            | 37.9            | -4.9               |
| <b>ANNUAL TOTAL:</b> | 47.6                | 51.0            | 3.5                | 57.6            | 51.7            | -5.9               | 51.4            | 51.3            | -0.1               |

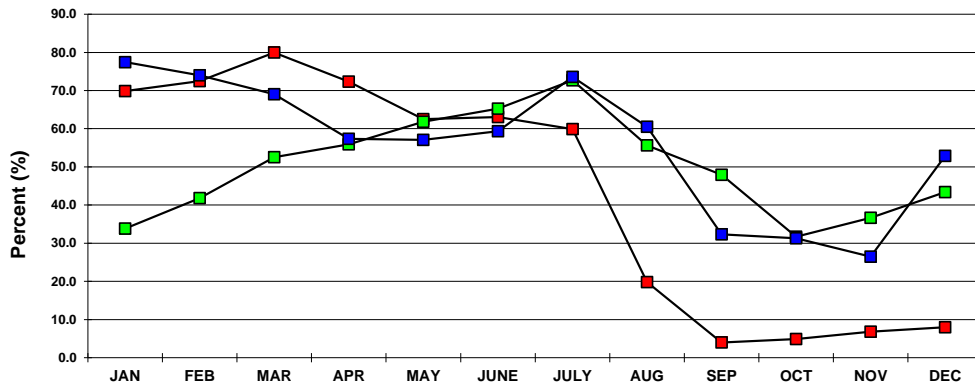
Notes:

Occupancy Rate equals reported number of room nights occupied as a percentage of reported room nights available. Percentage point change equals the absolute difference between current month and same month one year prior. Data subject to revision.

**U.S.V.I. OCCUPANCY RATES  
2017, 2018 AND 2019 YTD**



**ST. THOMAS/ST. JOHN OCCUPANCY  
2017, 2018 AND 2019 YTD**



**ST. CROIX OCCUPANCY RATES  
2017, 2018 AND 2019 YTD**

