

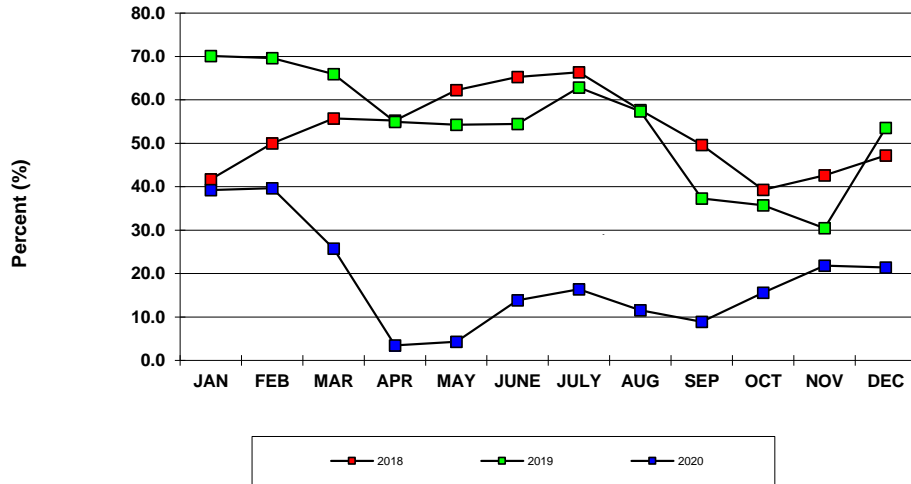
HOTEL OCCUPANCY RATES-U.S. Virgin Islands
Year To Date, Monthly, Quarterly and Annual Totals
January 2019 to December 2020

Period	ST. THOMAS/ST. JOHN			ST. CROIX			U.S.V.I., TOTAL		
	Percent 2019	Percent 2020	Pct. Pt. Change	Percent 2019	Percent 2020	Pct. Pt. Change	Percent 2019	Percent 2020	Pct. Pt. Change
YEAR TO DATE:									
DECEMBER	51.0	16.4	-34.7	51.7	27.0	-24.8	51.3	19.1	-32.1
MONTH:									
January	77.5	35.8	-41.6	58.8	46.8	-12.0	70.1	39.3	-30.9
February	74.0	36.4	-37.5	62.7	47.5	-15.1	69.6	39.7	-30.0
March	69.0	23.4	-45.7	61.3	31.2	-30.1	65.9	25.8	-40.2
April	57.3	0.7	-56.6	50.8	9.6	-41.2	54.9	3.5	-51.5
May	57.1	3.1	-53.9	49.5	7.0	-42.5	54.3	4.3	-50.0
June	59.3	11.2	-48.1	46.3	20.2	-26.1	54.5	13.8	-40.6
July	73.5	15.7	-57.8	50.0	18.0	-31.9	62.9	16.4	-46.5
August	60.5	13.5	-47.0	53.0	6.7	-46.3	57.4	11.5	-45.8
September	32.3	4.3	-28.0	47.7	20.0	-27.7	37.3	8.9	-28.4
October	31.3	14.1	-17.2	46.1	19.2	-26.9	35.7	15.6	-20.1
November	26.5	21.5	-4.9	42.3	22.6	-19.7	30.5	21.8	-8.6
December	52.9	20.5	-32.4	54.8	23.7	-31.1	53.5	21.4	-32.1
QUARTER:									
First	73.6	31.8	-41.8	60.9	41.7	-19.2	68.6	34.8	-33.8
Second	57.9	5.1	-52.8	48.9	12.2	-36.7	54.6	7.2	-47.3
Third	51.0	11.2	-39.8	50.2	14.9	-35.3	50.7	12.3	-38.4
Fourth	34.0	18.6	-15.3	47.3	21.8	-25.4	37.9	19.6	-18.3
ANNUAL TOTAL:	51.0	16.4	-34.7	51.7	27.0	-24.8	51.3	19.1	-32.1

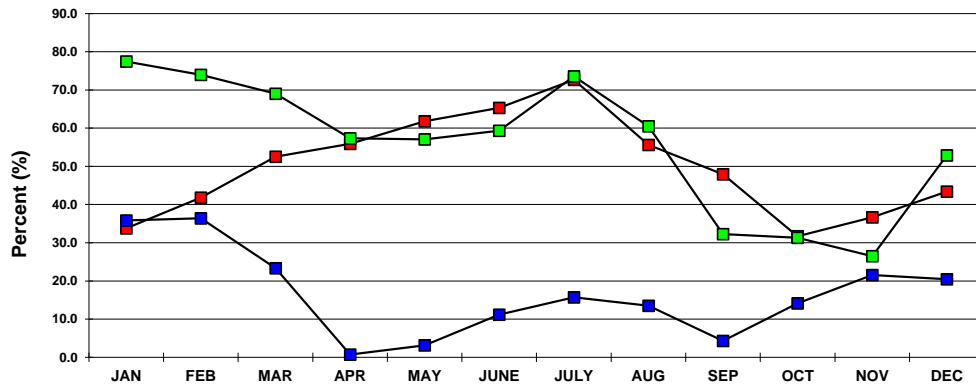
Notes:

Occupancy Rate equals reported number of room nights occupied as a percentage of reported room nights available. Percentage point change equals the absolute difference between current month and same month one year prior. Data subject to revision.

**U.S.V.I. OCCUPANCY RATES
2018, 2019 AND 2020 YTD**



**ST. THOMAS/ST. JOHN OCCUPANCY
2018, 2019 AND 2020 YTD**



**ST. CROIX OCCUPANCY RATES
2018, 2019 AND 2020 YTD**

