

MAJOR CARRIER DIRECT FLIGHT SEATS PER WEEK - U.S. Virgin Islands

Year To Date, Monthly, Quarterly and Annual Averages

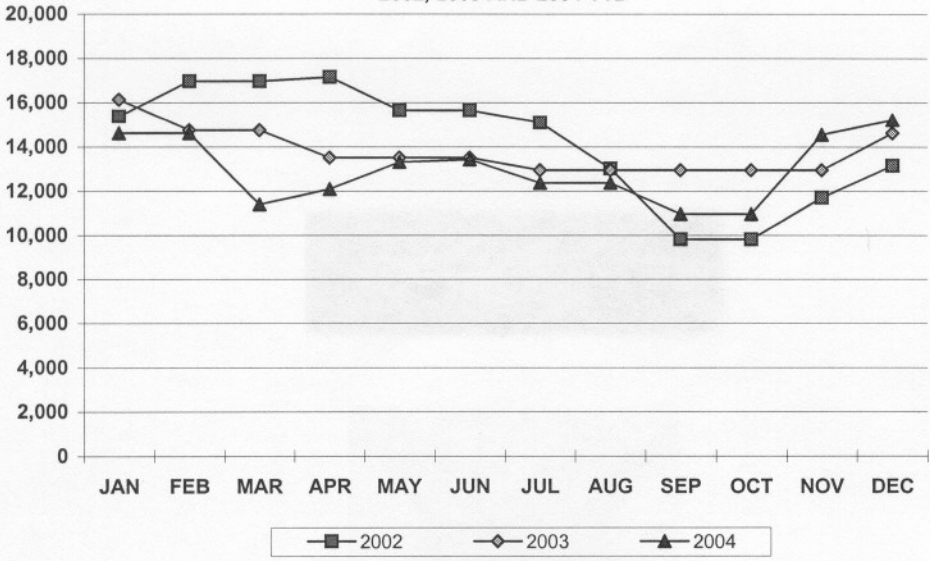
January 2003 to December 2004

Period	ST. THOMAS/ST. JOHN			ST. CROIX			U.S.V.I., TOTAL		
	2003	2004	Percent Change	2003	2004	Percent Change	2003	2004	Percent Change
YEAR TO DATE:									
DECEMBER	11,740	11,550	-1.6	2,058	1,443	-29.9	13,795	12,993	-5.8
MONTH:									
January	14,090	12,555	-10.9	2,058	2,058	0.0	16,148	14,613	-9.5
February	12,690	12,555	-1.1	2,058	2,058	0.0	14,748	14,613	-0.9
March	12,690	10,156	-20.0	2,058	1,251	-39.2	14,748	11,407	-22.7
April	11,458	10,156	-11.4	2,058	1,943	-5.6	13,516	12,099	-10.5
May	11,458	12,059	5.2	2,058	1,251	-39.2	13,516	13,310	-1.5
June	11,458	12,179	6.3	2,058	1,251	-39.2	13,516	13,430	-0.6
July	10,892	11,116	2.1	2,058	1,251	-39.2	12,950	12,367	-4.5
August	10,892	11,116	2.1	2,058	1,251	-39.2	12,950	12,367	-4.5
September	10,892	9,724	-10.7	2,058	1,251	-39.2	12,950	10,975	-15.3
October	10,892	9,724	-10.7	2,058	1,251	-39.2	12,950	10,975	-15.3
November	10,892	13,300	22.1	2,058	1,251	-39.2	12,950	14,551	12.4
December	12,555	13,952	11.1	2,058	1,251	-39.2	14,613	15,203	4.0
QUARTER:									
First	13,160	11,760	-10.6	2,058	1,789	-13.1	15,210	13,540	-11.0
Second	11,460	11,460	0.0	2,058	1,482	-28.0	13,520	12,950	-4.2
Third	10,890	10,650	-2.2	2,058	1,251	-39.2	12,950	11,900	-8.1
Fourth	11,450	12,330	7.7	2,058	1,251	-39.2	13,500	13,580	0.6
ANNUAL AVE.	11,740	11,550	-1.6	2,058	1,443	-29.9	13,795	12,993	-5.8

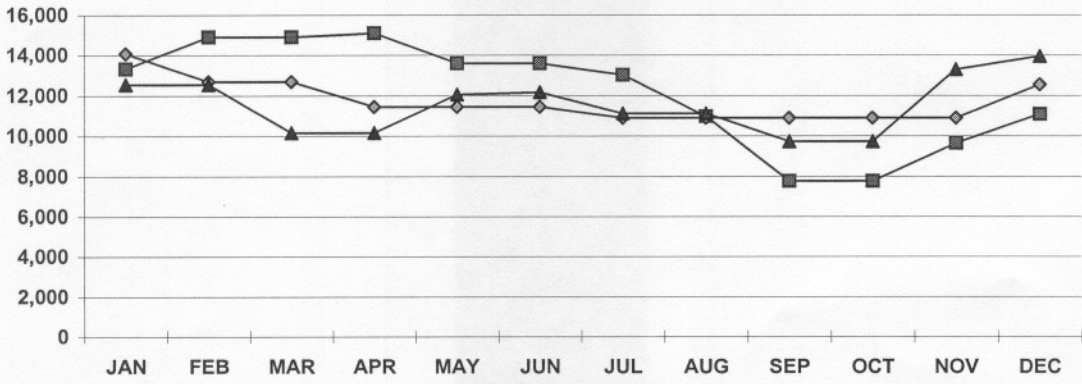
Notes:

U.S.V.I. "Direct Flights Seats Per Week" are based on daily scheduled flights arriving from outside of the Caribbean during the first week of a given month. "Major Carriers" are defined as airlines with scheduled service originating from outside the Caribbean region, generally the continental U.S. Data subject to revision.

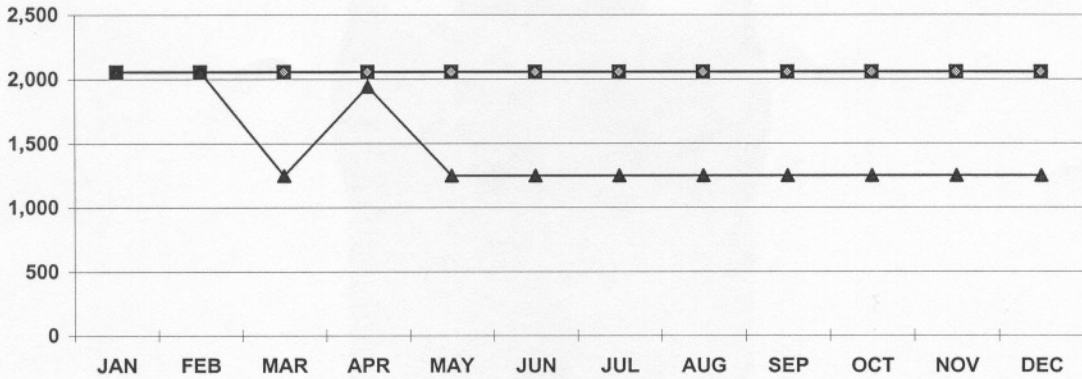
**U.S.V.I. WEEKLY AIR SEATS
2002, 2003 AND 2004 YTD**



**ST. THOMAS WEEKLY AIR SEATS
2002, 2003 AND 2004 YTD**



**ST. CROIX WEEKLY AIR SEATS
2002, 2003 AND 2004 YTD**



ST. THOMAS MAJOR CARRIERS
 DIRECT FLIGHT ARRIVALS
 FOR THE WEEK OF DECEMBER 15 -20, 2004

Airline	Flight Number	Originating Airport(s)	Stops	Plane Type	Seats Per Plane	Flights Per Week	Weekly Seats
American	655	JFK	0	757	188	7	1,316
American	1785	BWISJU	1	757	188	7	1,316
American	671	MIA	1	757	188	7	1,316
American	787	MIA	1	757	188	7	1,316
American	895	BOSTON	0	757	188	7	1,316
American	1571	JFK	0	757	188	2	376
AIR 2000	92	LON	0		312	1	312
Continental	460	NEWARK	0	734	124	7	868
Delta	203	JFK/ATL	0	757	183	7	1,281
Delta	1480	JFK/ATL	0	757	183	7	1,281
US Air	1480	CLT	0	757	193	7	1,351
US Air	1424	PA	0	757	193	7	1,351
United Air	1065	WASH	0	A-320	138	2	276
United Air	1063	CHI	0	A-320	138	2	276
TOTAL							13,952
ALL MAJOR CARRIERS GRAND TOTAL							15,203

ST. CROIX MAJOR CARRIERS
 DIRECT FLIGHT ARRIVALS
 FOR THE WEEK OF DECEMBER 15 - 20, 2004

Airline	Flight Number	Originating Airport(s)	Stops	Plane Type	Seats Per Plane	Flights Per Week	Weekly Seats
American	695	MIA	1	727	142	7	994
American Subtotal						7	994
AirPlus*	931	MPB	0	310	230	1	115
AirPlus*						1	115
US Air	675	CHARLOTTE	0	320	142	1	142
US Air Subtotal						1	142
TOTAL						9	1,251

*Note: AirPlus is a charter flight that arrives every two weeks from Denmark.