

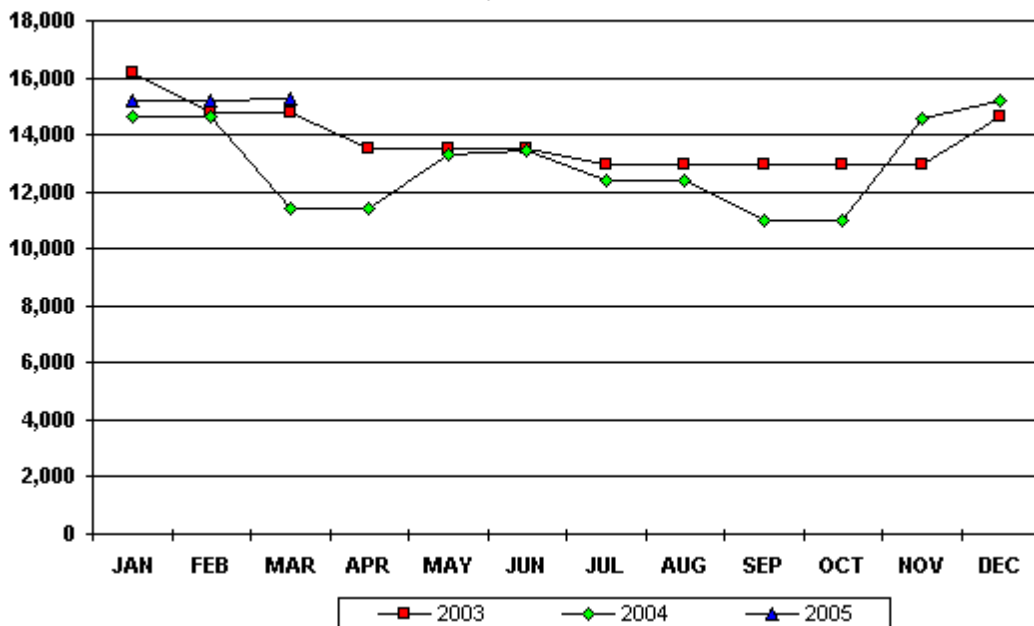
MAJOR CARRIER DIRECT FLIGHT SEATS PER WEEK - U.S. Virgin Islands
Year To Date, Monthly, Quarterly and Annual Averages
January 2004 to December 2005

Period	ST. THOMAS/ST. JOHN			ST. CROIX			U.S.V.I., TOTAL		
	2004	2005	Percent Change	2004	2005	Percent Change	2004	2005	Percent Change
YEAR TO DATE:									
DECEMBER	11,550	11,458	-0.8	1,385	1,463	5.6	12,935	12,918	-0.1
MONTH:									
January	12,555	13,952	11.1	2,058	1,251	-39.2	14,613	15,203	4.0
February	12,555	13,952	11.1	2,058	1,251	-39.2	14,613	15,203	4.0
March	10,156	13,676	34.7	1,251	1,617	29.3	11,407	15,293	34.1
April	10,156	13,676	34.7	1,251	1,617	29.3	11,407	15,293	34.1
May	12,059	12,054	0.0	1,251	1,545	23.5	13,310	13,599	2.2
June	12,179	12,054	-1.0	1,251	1,687	34.9	13,430	13,741	2.3
July	11,116	12,054	8.4	1,251	1,572	25.7	12,367	13,626	10.2
August	11,116	12,054	8.4	1,251	1,572	25.7	12,367	13,626	10.2
September	9,724	5,098	-47.6	1,251	1,288	3.0	10,975	6,386	-41.8
October	9,724	6,908	-29.0	1,251	1,288	3.0	10,975	8,196	-25.3
November	13,300	8,036	-39.6	1,251	1,430	14.3	14,551	9,466	-34.9
December	13,952	13,967	0.1	1,251	1,430	14.3	15,203	15,397	1.3
QUARTER:									
First	11,760	13,860	17.9	1,790	1,370	-23.5	13,540	15,230	12.5
Second	11,460	12,590	9.9	1,250	1,620	29.6	12,720	14,210	11.7
Third	10,650	9,740	-8.5	1,250	1,480	18.4	11,900	11,210	-5.8
Fourth	12,330	9,640	-21.8	1,250	1,380	10.4	13,580	11,020	-18.9
ANNUAL AVE.	11,550	11,458	-0.8	1,385	1,463	5.6	12,935	12,918	-0.1

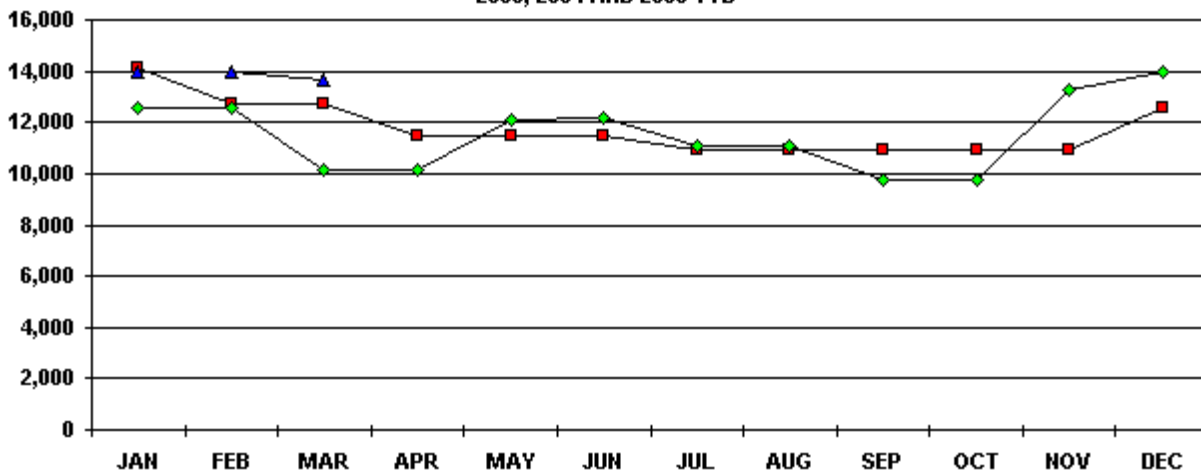
Notes:

U.S.V.I. "Direct Flights Seats Per Week" are based on daily scheduled flights arriving from outside of the Caribbean during the first week of a given month. "Major Carriers" are defined as airlines with scheduled service originating from outside the Caribbean region, generally the continental U.S. Data subject to revision.

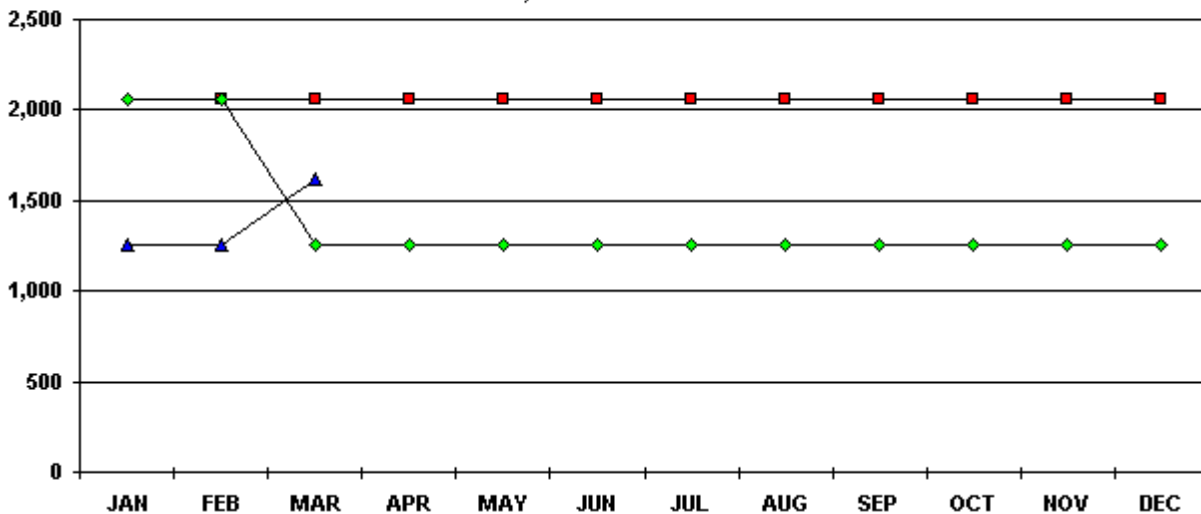
**U.S.V.I. WEEKLY AIR SEATS
2003, 2004 AND 2005 YTD**



**ST. THOMAS WEEKLY AIR SEATS
2003, 2004 AND 2005 YTD**



**ST. CROIX WEEKLY AIR SEATS
2003, 2004 AND 2005 YTD**



ST. CROIX MAJOR CARRIERS
 DIRECT FLIGHT ARRIVALS
 FOR THE WEEK OF DECEMBER 15 - 21, 2005

Airline	Flight Number	Originating Airport(s)	Stops	Plane Type	Seats Per Plane	Flights Per Week	Weekly Seats
American	695	MIA	1	727	142	7	994
American Subtotal						7	994
Delta	1777	ATL	0	737	147	2	294
Delta						2	294
US Air	675	CHARLOTTE	0	A-319	142	1	142
US Air Subtotal						1	142
TOTAL						10	1,430

ST. THOMAS MAJOR CARRIERS
 DIRECT FLIGHT ARRIVALS
 FOR THE WEEK OF DECEMBER 15 -21, 2005

Airline	Flight Number	Originating Airport(s)	Stops	Plane Type	Seats Per Plane	Flights Per Week	Weekly Seats
American	655	JFK	0	757	188	7	1,316
American	1944	FT.LAU\SJU	1	757	188	7	1,316
American	671	MIA	1	757	188	7	1,316
American	798	MIA	1	757	188	7	1,316
American	895	BOSTON	0	757	188	4	752
American	1567	JFK	0	757	188	4	752
AIR 2000	92	LON	0		312	1	312
Continental	1903	NEWARK	0	734	124	7	868
Delta	361	PROVIDENCE	0	757	183	7	1,281
Delta	320	WASH-DC	0	757	183	7	1,281
Spirit	102	FT. LAU	0	A-319	134	7	938
US Air	1480	CHARLOTTE	0	737	193	5	965
US Air	1424	PA	0	737	193	5	965
US Air	299	CHARLOTTE	0	737	193	1	193
US Air	935	LAGUARD/NY	0	A-319	120	1	120
United Air	1065	WASH	0	A-320	138	1	138
United Air	1063	CHI	0	A-320	138	1	138
TOTAL							13,967
ALL MAJOR CARRIERS GRAND TOTAL							15,397