

HOTEL ROOM NIGHTS AVAILABLE, U.S. Virgin Islands
Year To Date, Monthly, Quarterly and Annual Totals
In Thousands of Units, January 2013 to December 2014

Period	ST. THOMAS/ST. JOHN			ST. CROIX			U.S.V.I., TOTAL		
	2013	2014	Percent Change	2013	2014	Percent Change	2013	2014	Percent Change

YEAR TO DATE:

DECEMBER	1,366.6	1,333.8	-2.4	425.9	420.3	-1.3	1,792.4	1,754.2	-2.1
----------	---------	---------	------	-------	-------	------	---------	---------	------

MONTH:

January	118.5	115.3	-2.7	36.5	36.6	0.1	155.0	151.8	-2.0
February	107.0	107.2	0.2	33.0	32.1	-2.8	140.0	139.3	-0.5
March	118.5	114.8	-3.1	36.5	36.5	0.0	155.0	151.3	-2.4
April	114.6	108.6	-5.2	35.3	35.3	0.0	150.0	144.0	-4.0
May	118.5	111.2	-6.1	36.5	36.5	0.0	155.0	147.7	-4.7
June	110.9	108.2	-2.4	35.3	33.5	-5.3	146.3	141.7	-3.1
July	114.6	113.1	-1.3	36.5	36.5	0.0	151.1	149.6	-1.0
August	114.6	112.3	-2.0	36.5	36.5	0.0	151.1	148.8	-1.5
September	110.4	111.4	0.9	35.1	35.3	0.8	145.5	146.8	0.9
October	114.4	113.7	-0.6	35.3	34.6	-2.1	149.7	148.3	-1.0
November	110.5	107.2	-3.0	34.2	33.1	-3.2	144.7	140.3	-3.0
December	114.2	110.8	-2.9	35.0	33.8	-3.5	149.1	144.6	-3.1

QUARTER:

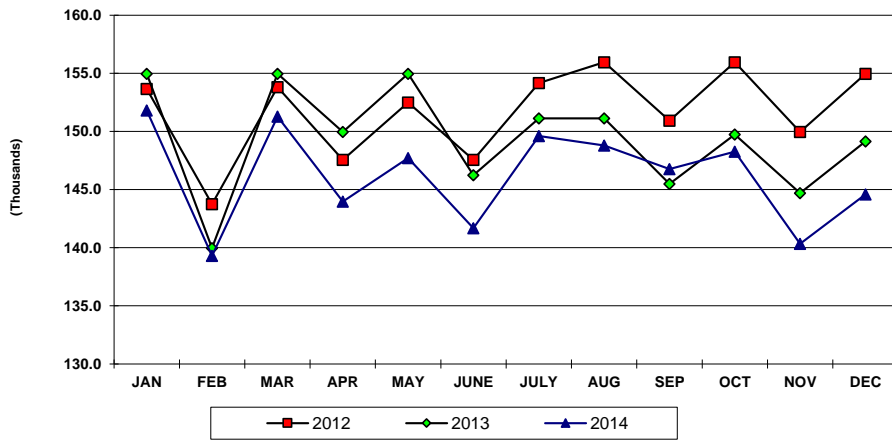
First	343.9	337.3	-1.9	106.0	105.1	-0.8	449.9	442.4	-1.7
Second	344.0	328.0	-4.6	107.2	105.3	-1.7	451.2	433.4	-3.9
Third	339.6	336.8	-0.8	108.1	108.4	0.2	447.8	445.2	-0.6
Fourth	339.1	331.7	-2.2	104.5	101.5	-2.9	443.6	433.2	-2.3

ANNUAL TOTAL:	1,366.6	1,333.8	-2.4	425.9	420.3	-1.3	1,792.4	1,754.2	-2.1
---------------	---------	---------	------	-------	-------	------	---------	---------	------

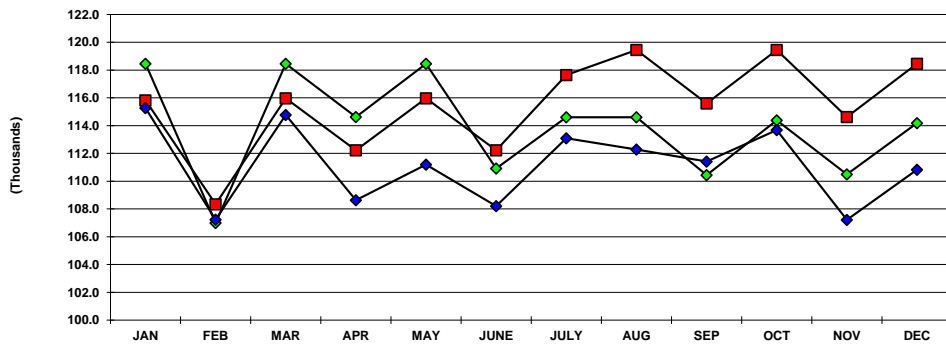
Notes:

Room Nights Available is the sum, across all units for all visitor accommodations, of the number of nights each unit was available for occupancy during a given period. Data subject to revision.

**U.S.V.I. ROOM NIGHTS AVAILABLE
2012, 2013 AND 2014 YTD**



**STT/STJ ROOM NIGHTS OCCUPIED
2012, 2013 AND 2014 YTD**



**ST. CROIX ROOM NIGHTS OCCUPIED
2012, 2013 AND 2014 YTD**

