

CRUISE SHIP CALLS - U.S. VIRGIN ISLANDS

January 2022 to December 2023

Year To Date, Monthly, Quarterly and Annual Totals In Thousands of Dollars

	ST. THOMAS/ST. JOHN			ST. CROIX			U.S.V.I., TOTAL		
	2022	2023	% CHG.	2022	2023	% CHG.	2022	2023	% CHG.
YEAR TO DATE:									
DECEMBER	367	431	17.4	41	64	56.1	414	495	19.6
MONTH:									
January	26	61	-	1	10	-	27	71	-
February	45	51	13.3	8	10	25.0	53	61	15.1
March	55	65	18.2	8	18	-	63	83	31.7
April	30	45	50.0	5	7	40.0	35	52	48.6
May	18	25	38.9	0	0	0.0	18	25	38.9
June	14	15	7.1	1	2	100.0	15	17	13.3
July	16	18	12.5	2	2	0.0	18	20	11.1
August	16	22	37.5	0	1	-	22	23	4.5
September	8	8	0.0	0	1	-	8	9	12.5
October	23	17	-26.1	0	3	-	23	20	-13.0
November	42	37	-11.9	9	5	-44.4	51	42	-17.6
December	74	67	-9.5	7	5	-28.6	81	72	-11.1
QUARTER:									
First	126	177	40.5	17	38	123.5	143	215	50.3
Second	62	85	37.1	6	9	50.0	68	94	38.2
Third	40	48	20.0	2	4	100.0	48	52	8.3
Fourth	139	121	-12.9	16	13	-18.8	155	134	-13.5
ANNUAL TOTAL:	367	431	17	41	64	56.1	414	495	19.6

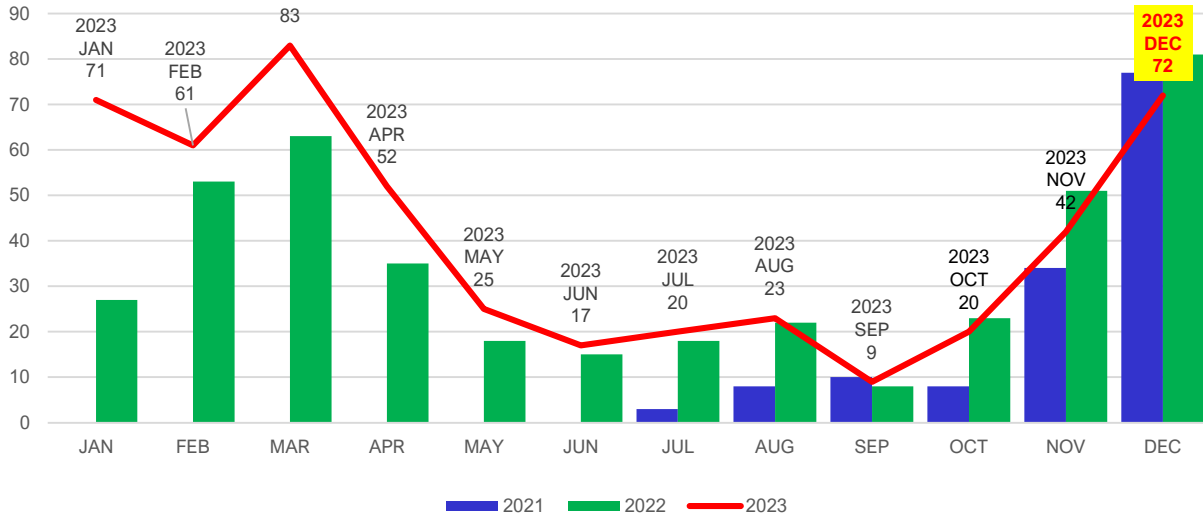
Notes:

Totals by island include first and second port of entry ship calls. Total ship calls for the U.S.V.I. include first territorial port of entry only; ships visiting more than one U.S. Virgin Island during the same cruise are only counted once in the U.S.V.I. total. Consequently, the U.S.V.I. total will always be less than or equal to the sum of the two island totals as indicated.

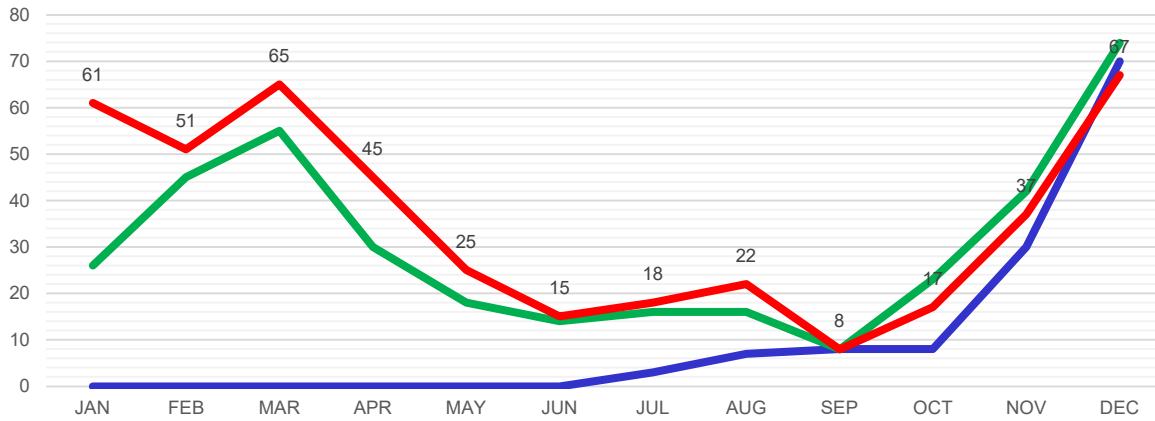
Data subject to revision.

www.usviber.org | webmaster@usviber.org

USVI CRUISE CALLS
2021, 2022 AND DECEMBER 2023 YTD



ST. THOMAS CRUISE CALLS
2021, 2022 AND DECEMBER 2023 YTD



ST. CROIX CRUISE CALLS
2021, 2022 AND DECEMBER 2023 YTD

