

HOTEL ROOM NIGHTS OCCUPIED

JANUARY 2024 to JULY 2025

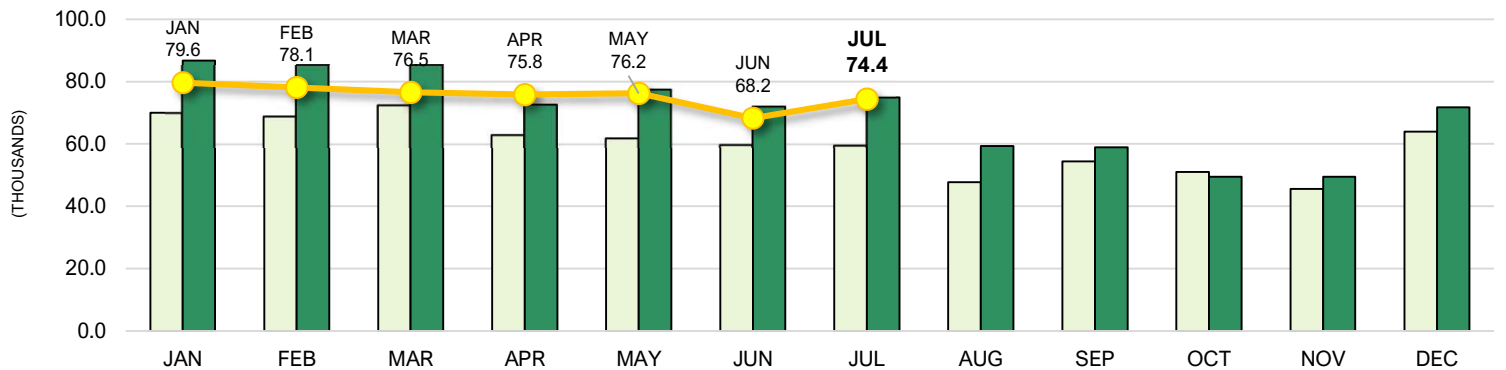
U.S. Virgin Islands, Year To Date, Monthly, Quarterly and Annual Totals

| Period | ST. THOMAS/ST. JOHN | | | ST. CROIX | | | U.S.V.I., TOTAL | | |
|----------------------|---------------------|--------------|------------|--------------|--------------|--------------|-----------------|--------------|-------------|
| | 2024 | 2025 | % chg. | 2024 | 2025 | % chg. | 2024 | 2025 | % chg. |
| YEAR TO DATE: | | | | | | | | | |
| JULY | 415.9 | 413.5 | -0.6 | 138.3 | 115.2 | -16.7 | 554.2 | 528.8 | -4.6 |
| January | 65.3 | 62.2 | -4.7 | 21.3 | 17.4 | -18.3 | 86.6 | 79.6 | -8.1 |
| February | 64.7 | 59.3 | -8.3 | 20.5 | 18.7 | -8.4 | 85.2 | 78.1 | -8.4 |
| March | 62.4 | 58.9 | -5.6 | 22.9 | 17.6 | -23.3 | 85.3 | 76.5 | -10.3 |
| April | 55.2 | 61.2 | 11.0 | 17.5 | 14.6 | -16.8 | 72.6 | 75.8 | 4.3 |
| May | 58.1 | 61.9 | 6.5 | 19.4 | 14.3 | -26.1 | 77.4 | 76.2 | -1.6 |
| June | 55.5 | 52.5 | -5.4 | 16.5 | 15.7 | -5.0 | 72.1 | 68.2 | -5.3 |
| July | 54.7 | 57.4 | 5.0 | 20.2 | 17.0 | -16.0 | 74.9 | 74.4 | -0.7 |
| August | 47.3 | - | - | 12.0 | - | - | 59.3 | - | - |
| September | 48.1 | - | - | 10.8 | - | - | 58.9 | - | - |
| October | 40.9 | - | - | 8.6 | - | - | 49.4 | - | - |
| November | 40.9 | - | - | 8.6 | - | - | 49.4 | - | - |
| December | 54.5 | - | - | 17.2 | - | - | 71.8 | - | - |
| QUARTER: | | | | | | | | | |
| First | 192.4 | 180.5 | -6.2 | 64.7 | 53.7 | -17.0 | 257.1 | 234.2 | -8.9 |
| Second | 168.8 | 175.6 | 4.1 | 53.4 | 44.6 | -16.5 | 222.2 | 220.2 | -0.9 |
| Third | 137.3 | - | - | 40.5 | - | - | 177.8 | - | - |
| Fourth | 143.5 | - | - | 36.6 | - | - | 180.1 | - | - |
| ANNUAL TOTAL: | 642.0 | - | - | 195.1 | - | - | 837.1 | - | - |

U.S.V.I. ROOM NIGHTS OCCUPIED

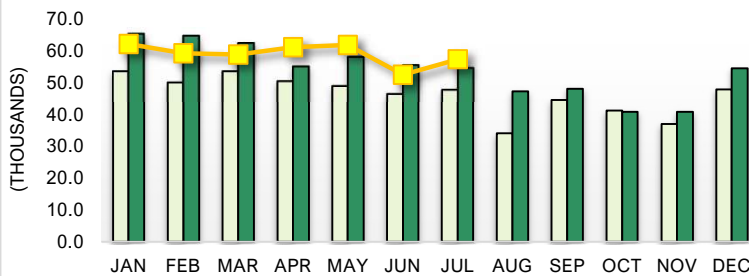
2023, 2024 AND JULY 2025 YTD

2023 2024 2025



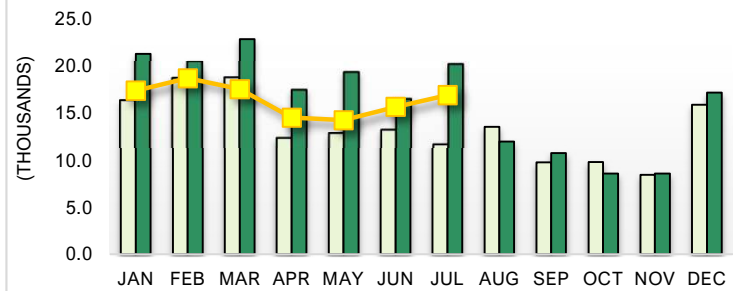
STT/STJ ROOM NIGHTS OCCUPIED

2022, 2023 AND JULY 2025 YTD



ST. CROIX ROOM NIGHTS OCCUPIED

2022, 2023 AND JULY 2025 YTD



Note: Occupancy Rate equals the reported number of room nights occupied as a percentage of available room nights. Percentage point change equals the absolute difference between the current month and the same month one year prior. **All Data is subject to revision. Email: webmaster@usviber.org | Website: www.usviber.org | Phone: 340-776-7953**